



# The Wood Spinner

Central Virginia Woodturners

<http://www.centralvawoodturners.org>

JULY 2013



## In This Issue

President's Corner .....	2	Calendar .....	6
Meeting Minutes .....	3	Show (no Tell) .....	4
Steve Pritchard Demo .....	7	For Sale .....	12



The Wood Spinner  
Central Virginia Woodturners <http://www.centralvawoodturners.org>

CVW Newsletter—July 2013

## President's Corner



I get as much pleasure at the end of a meeting as at the beginning. It is the spirit of cooperation and team work as many hands jump in to break down the tables, stack the chairs and wheel all of our stuff into our storage room. I was especially glad to see some of the new members helping. That same spirit is needed as the officers and other team members seek individuals to step up to fill positions we will be vacating on Dec 31<sup>st</sup>. Richard Landreth is willing to stay on as Treasurer for another term. The other positions that are expiring are: Executive board- President, two Vice

Presidents (one of which is Program Chairman), and Secretary. The other management team members are: Newsletter Editor, Audio Visual Coordinator, Web Master, Club Store Manager, Librarian and Food coordinator (aka Food Zar). Some of these folks may decide to ride out another term but most of the positions will need "new blood". What can you do to help? Consider revolving teams- two or more people sharing a task such as Librarian or Newsletter Editor. How about three or more rotating turns helping the Video Coordinator? The two Vice Presidents could share scheduling programs and no one has to do it the way we did it. Every one of the existing officers will coach and assist the new officers if needed or wanted. October will be breathing down our necks before we know it. We must start lining up new candidates in the next several months. No organization thrives with the same people leading it year after year. Don't be shy! Talk to us.

### Old Farmers Advice

"If ya get to thinking you're a person of some influence, try orderin somebody else's dog around"

The Wood Spinner is published monthly by the Central Virginia Woodturners.  
[www.centralvawoodturners.org](http://www.centralvawoodturners.org)  
Tom Evans: President  
Marsden (Mars) Champaign: Editor  
[mchampaign@ntelos.net](mailto:mchampaign@ntelos.net)

Front cover photo: a large walnut bowl by Phil Evans. Photo by David Rhodes.



# The Wood Spinner

Central Virginia Woodturners <http://www.centralvawoodturners.org>

**June 18, 2013 Minutes, Crimora Community Center, Central Virginia Woodturners Club (CVW)**

**Officers:**

President - Tom Evans                      Treasurer- Richard Landrefh  
VP of Programs – Dennis Hippen        Secretary- Jim Oates  
Second VP - Nate Hawkes

**Key functional support offices:**

Audio Visual - John O'Neil                Librarian- Hal Green  
Newspaper Editor- Mars Champaign    Food Coordinator– Dick Miksad  
Store Manager - Kirk McCauley        Web Master -Tim Quillen

Attendance: 41, Members 39, Guests: 2

**The General Meeting:**

Tom Evans opened the meeting at 6:30 and introduced Richard Landreth who gave the treasurers report.

New member Tom Calibrea and visitors Dennis Hurdle and Jim Butler were welcomed.

Tom reviewed the user name and password for the member portion of the web site and reminded members if they did not want their information shared to notify the treasurer, Richard. Landreth

Tom announced that the AAW Educational Grant had not been approved but the board had decided, based on member input at the last meeting, to proceed since the Ruritans offered the room for \$15 a month. He will meet with the electrician to determine the cost of the electrical installation since that will probably be the biggest expense.

Tom reminded us that this is an election year and a new slate of officers is needed for every office except treasurer as well as committee heads. If no volunteers people will be coerced.

*(Continued on page 4)*



(Continued from page 3)

The Shenandoah Valley Art Center has again issued the club an invitation for a show of club member's work. The pieces can be for sale NFS or price on request. Bring pieces to the August meeting and Tom will deliver them to SVAC. This is a good opportunity to show what we can do. Later entries can be arranged through Tom.

Tom announced that tonight was Show, No Tell and that the stores were open.

**Steve Pritchard**, tonight's demonstrator, showed a cross section of his work including a Norfolk Island Pine urn with a Padauk finial threaded for sturdy closure. His Box Elder vessel with an ebony finial was very colorful even after 3 years in his shop. His dyed Sycamore laminate pepper mill displayed a wide variety of colors. Embellishments made his Bradford Pear vessel unusual. His "astigmatism" platter was unusual but clearly the flashes were understood by those with the condition as was Counting the Days" platter with hash mark groups surrounding the center bowl.



He later demonstrated the process to make the black gesso coated platter with unique repetitive patterns that drew the eye to the center of the platter. His wooden bouquet of flowers with wood burned stamens and plywood leaves was a nice example of ap-

plication of colors and texturing which he also demonstrated.

(Continued on page 5)



# The Wood Spinner

Central Virginia Woodturners <http://www.centralvawoodturners.org>



**Roger Chandler** showed a lidded box made of Maple with Walnut bands decorating the lid and base and a bee hive on a wire stand complete with a yellow and black bee. His hackberry chalice was nicely proportioned.

**Dennis Hippen** produced two large natural edge bowls. One was of burl Maple and the other Ambrosia



Maple.



**Phil Evans** showed a large, deep Walnut bowl with a flared edge and a natural edge Box Elder bowl. He also brought in another bark sided radial turned Box Elder bowl that was very

impressive and a nicely turned cherry bowl with a large bark inclusion in the rim.

**Jim Oates** showed a White Oak burl flower vase lined with a pickle jar cut to fit.

**Nate Hawkes** showed a large Elm Bowl with a smooth natural edge and an Ambrosia Beech bowl with a nice edge and finish on both

**Kirk McCauley** showed an impressive Monticello Poplar vessel with the core of dark heartwood on one side and a hollow spot on the other side with a jagged, dark edge that blended well with





the rest of the colors. He also showed boxes filled with wine stoppers and letter openers made from the same wood. The bottle stoppers were topped by the natural inner edge of the tree making an unusual stopper

### **Demonstration:**

Barbara Dill introduced Steve Pritchard with what he called "the best introduction he had ever received.

Steve opened his demo with the process to produce a bangle and showed us how to properly size and shape the bangle in preparation for reversing it and opening the center without damaging the bangle or the chuck with a small rubber band and a spacer to protect the chuck. Once the bangle was complete he moved to the table and showed a variety of texturing and finishing techniques he uses to enhance his turnings. Steve says he quickly tired of "round and brown" and started looking for ways to add unique finishes and textures to his works. He also passed out the resource sheet attached which is very helpful.

His pattern board allows him to quickly distribute equal segments of a pattern to the piece.

He went through the engravers, rotary tools and wood burning tools and tips that he uses to embellish his work.

His third demo of producing a finial from an ebony blank showed the great care and careful support required to make a well-proportioned finial with a delicate appearance.

### **CALENDAR**

The next club meeting will be Tuesday July 16, 2012 from 7:00 pm to 9:00 pm. TWO Topic Night starting:

1. Starke Smith will cover Chain Saw Safety Discussion.
2. Tim Kipps and/ or Richard Landreth will cover DYI WOOD Stabilization Process/Equipment

Note: Steve Pritchard's resource list is included on pages 10 and 11.

.  
.

### Steve Pritchard's Demonstration: How to Make a Bangle.



Left and above: Steve turning the bangle. He makes the bangle 2-1/2" to 2-5/8" in diameter and 1/2" to 3/8" thick. He uses a bowl gouge for rounding and a bedan to cut a shallow recess for mounting on a chuck. After shaping the bangle, he uses a spindle gouge to cut a bead in preparation for reversing the bangle on the chuck to finish the back side.



Fiberboard rings are used as spacers to move the piece far enough away from the chuck to protect the chuck and tool, then a rubber band to protect the inside of the bangle.

*Photos by David Rhodes*



# The Wood Spinner

Central Virginia Woodturners <http://www.centralvawoodturners.org>



Left: Steve Pritchard shows a pair of his bangles

Below: Steve with his texturing and coloring tools and equipment.



Left: a textured and colored Bradford pear piece by Steve .

Right: Linda Pritchard shows Steve's platter "Astigmatism."



*Photos: David Rhodes*





## Steve Pritchard's Demonstration: Making a Finial



Start with a musical instrument grade ebony blank about 6-7 inches long and 7/8" diameter.

Turn a tendon for the jaws of your chuck. Mount the blank in the chuck. Rotate the blank by hand in the jaws to be sure you have a good seat.

Start turning from the tailstock end and work towards the headstock.

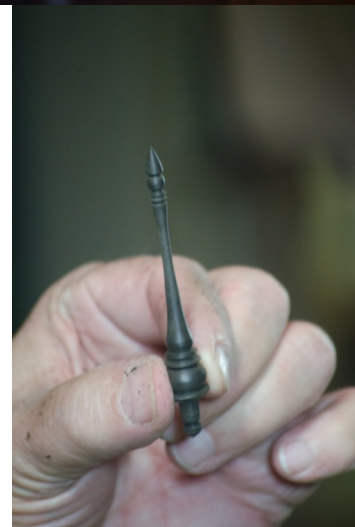
Use the tailstock to keep pressure on on the piece while

turning.

Use the 1/3–2/3 rule for the thinnest part of the shaft.

The tip is a convex curve with a ball just below.

*Photos: David Rhodes*





# The Wood Spinner

Central Virginia Woodturners <http://www.centralvawoodturners.org>

## Resource List

Steve Pritchard

[steve@stevepritchardwoodturning.com](mailto:steve@stevepritchardwoodturning.com) 770-947-3457

**Fiebing's Leather Dyes:** Tandy Leather Factory

Black Qt. 2101-01 \$25.00, 4 oz. \$6.00. Colors Navy Blue 2100-11, Red 2100-13

**Artisan Dyes:** Craft Supply - About \$8.00 for an 8 oz. container.

**Fiber reactive dye:** (aka Procion dye) <http://www.prochemicalanddye.com>

**Raptor Setup Tool:** Craft Supply - 35,40,45,50 and 60 degrees. \$8.00 each or about \$34.00 for all five (15% discount on three or more.)

**2 Flute Quick Change Drive Center:** Best Wood Tools, <http://bestwoodtools.stores.yahoo.net/> \$55.00.

Version for Nova, Vicmare and Talon chucks

**Baxter Threading Master:** Best Wood Tools, <http://bestwoodtools.stores.yahoo.net/> to fit mini-lathes \$399 and for larger lathes \$599. Other versions available.

**BLO2XYGEN:** Highland Woodworking and many other on-line woodturning sites. About \$12.00 a can which is about 75 uses.

**Behlen Salad Bowl Finish:** Woodcraft, Rockler, Highland Woodworking, Amazon, Penn State Industries. About \$16.00 /quart.

**General Finishes Salad Bowl Finish:** Generally the same sources as Behlen's. Darkens wood a little more, but I've found it in gallon sizes. About \$50-60 / gallon.

**Minwax Antique Oil:** I haven't used but friends swear by it. Ace Hardware and Highland Woodworking sell it.

**Wilkeron Automatic Condensate Drain** for your air compressor

<http://www.mcmaster.com/#condensate-drains/=n6105g> Product No. 4919K13 . About \$80.00



**Sherwin Williams CAB Acrylic Laquer:** Water white laquer that won't yellow over time like nitrocellulose lacquers. <http://oem.sherwin-williams.com> and search for "cab acrylic". If you go to <http://sherwin-williams.com> be sure to set the search to "all sites" when you search. About \$35-40 a gallon. Not all locations carry this product but can order it. CAB = Cellulose Acetate Butyrate



**Micro-mesh sanding pads:** 1,500 to 12,000 grit in nine steps. Penn State Industries.  
<http://www.pennstateind.com>

**Norton 3X Sandpaper:** Inexpensive source: Jamestown Distributors <http://www.jamestowndistributors.com>

**Smiths Cold (or warm formula) CPES EpoxyWater:** water thin, water clear epoxy:  
<http://www.jamestowndistributors.com>

**Jacquard Lumiere Exciter Pack:** Halo & Jewel Colors can be found at various on line sources as well as Dick Blick and other brick and mortar locations. \$12-13.

**Old Fashioned Milk Paint Company:** Milk paint <http://www.milkpaint.com/> Also can be found at various on line sources including Highland Woodworking and Woodcraft. \$12-13 for enough powder to make a pint of paint.

**Hand Chasing Thread Tools:** Craft supply has Sorby for about \$125 without the support tool which is about \$40-\$50 for Sorby and Henry Taylor respectively. <http://www.woodturnerscatalog.com>

**Other Thread Chasing Info:** Search youtube.com for "Wyoming woodturner". Google: "hand chase thread", <http://mikepeacewoodturning.blogspot.com>

**Razertip Pyrography Tools:** <http://www.razertip.com/>

**Nichrome Wire:** [http://myworld.ebay.com/jacobsonline?\\_trksid=p2047675.12559](http://myworld.ebay.com/jacobsonline?_trksid=p2047675.12559) Haven't used this source, but my other sources have dried up.

**Sanding Pads:** <http://vineswoodnwonders.com/firm-and-soft-innerface-pads/>

**Optima 2 Plus Micro-motor Rotary Tool:** <http://www.mhcrafter.com> or <http://www.carvertools.com> \$285- 320 depending on hand piece 35K or 45k rpm respectively.

**Metabo Orbital Sander:** <http://www.amazon.com/Metabo-SXE400-8-Inch-Random-Sander/dp/B00004YBX5> about \$120.

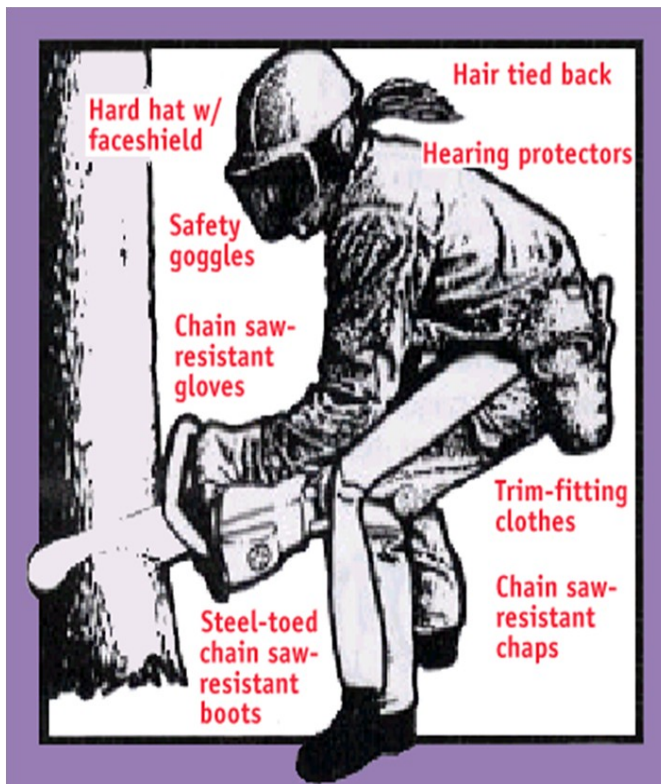
**Rotary Chisels:** <http://www.rotarychisel.com/info.html> or <http://www.treelineusa.com/power-carving-burs/18-ROTO-CHISELS> About \$25-35 depending on size.

**FOR SALE:**

Two Skews For Sale: EACH \$40. One in front is a Sorby skew- HSS- 1" wide with 12" handle  
 One in back is a Richard Raffan round nose skew from Craft Supply that is HHS- 3/4" wide with 15" handle. Contact Dennis Hippen at 540-943-1211



*Quick bit of chain saw safety*



- Personal protective equipment (PPE) MUST be worn at all times.
- This can greatly reduce injuries and prevent death from chain saw injuries.
- Keep both hands on the chain saw handles.