



# The Wood Spinner

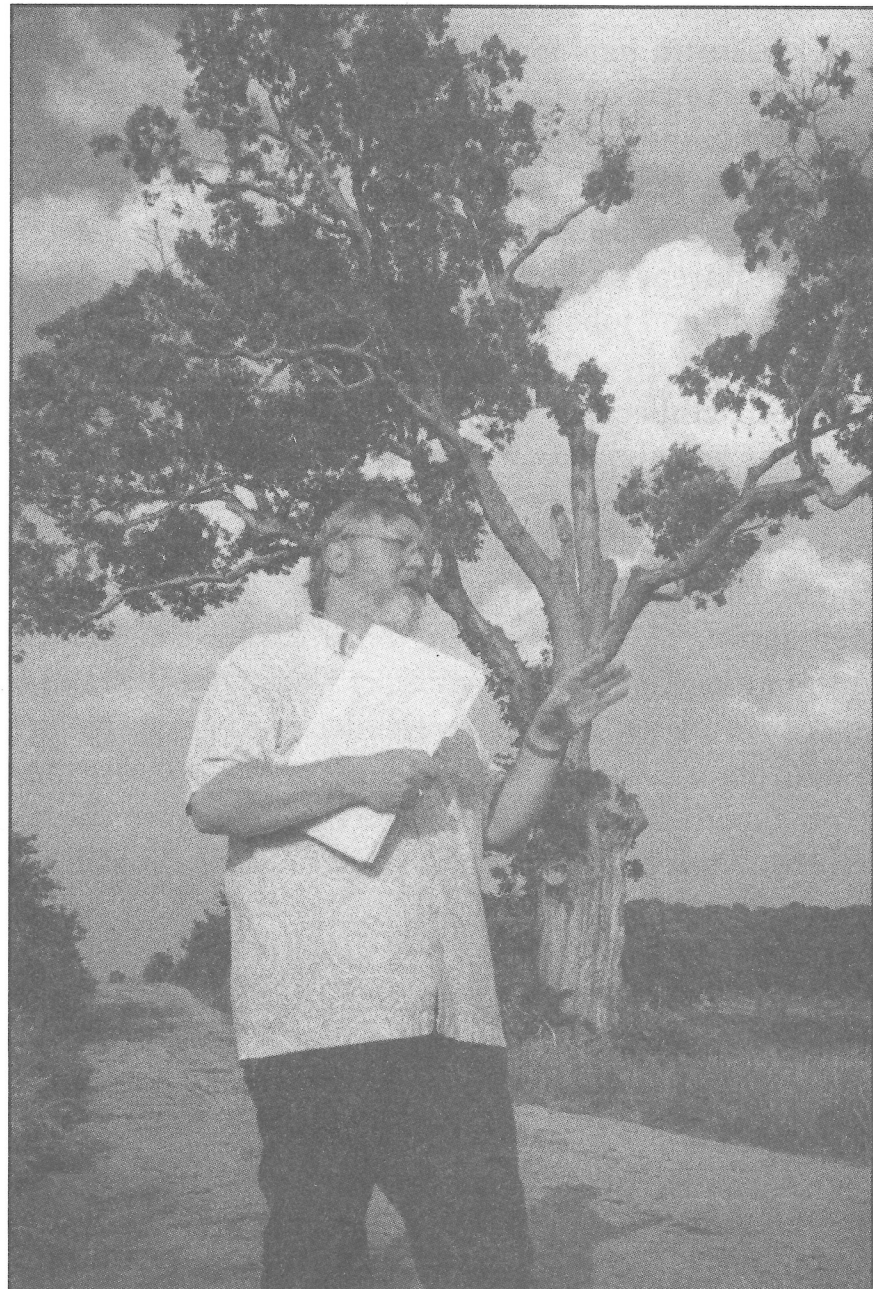
Central Virginia Woodturners

<http://www.centralvawoodturners.org>

October 23, 2012

John L. Heatwole, Civil War Teacher, sharing his knowledge of the war while standing in the shadow of the Stonewall Jackson Prayer Tree. Legend says the ancient oak tree marked the site where General Thomas "Stonewall" Jackson conducted religious services.

*Photograph from the Carol M. DeHart book "John L. Heatwole, The Word Gatherer", page 65. Lot's Wife Publishing, Staunton, VA, Oct 2007.*



Courtesy Shenandoah Valley Battlefields Foundation

## In This Issue

President's Corner	2	Demonstration Photos	8
Calendar	2	Safety lesson	8
Minutes	3	Silent Auction	11
Show & Tell Photos	6	Miscellaneous Tidbits	12



## CVW Newsletter—October 2012

### President's Corner

Aaahh. Cool nights, warm days and Mother Nature has begun painting the mountains—this is one of my favorite times of the year. If you didn't make it to the Virginia Woodturner's Symposium, you missed a great event. Also missing or soon will be, are several pages of the newsletter. Denny Martin has asked to be relieved of editor's duties as he prepares to deal with some serious medical treatments. Mars Chamstep in on an interim basis. You can expect some of the newsletter's content to disappear only to reappear on the member's only portion of our web site. You can also expect fewer and smaller photos. Thank you Mars for stepping up and a special thanks to Denny for putting his heart and soul into the newsletter.



newsletter. Denny Martin of editor's duties as he some serious medical paign has volunteered to sis. You can expect some tent to disappear only to ber's only portion of our expect fewer and smaller for stepping up and a spe- putting his heart and soul

The October program was another winner! Ervin Stutzman demonstrated platter turning. They are by far the most impressive platters I've seen. The bottoms are even more impressive than the tops and he made it look so easy. Now if I can find some dry wood that doesn't have holes in it, I've got to give it a try.

gram was another winner! strated platter turning. impressive platters I've even more impressive

You should have received an email from Jim Oates (Secretary) with a 2 page survey attached. That information is important to Dennis Hippen, our VP Programs, as he develops our 2013 program schedule. Please, respond to it as soon as possible.

Finally, our November meeting is multi-station and the December social night/meeting has been moved up one week to December the 11<sup>th</sup>. Mark that evening on your calendar.

### Calendar of Club Events

**November 20** — Multi-Station- TBD Christmas Turnings featuring Albert and Gary Dale, Miles Everard, Jim Kueck and an undetermined CVW member..

**December 11** - "Note: date is second Tuesday and not third Tuesday." — Holiday party and big show and tell. Spouses and significant others invited. RSVP is essential.

In case of inclement weather check the website for announcements of possible cancellation.



Central Virginia Woodturners Club (CVW), October 16, 2012 Minutes  
 Crimora Community Center

**Officers:**

President - Tom Evans  
 VP of Programs – Dennis Hippen  
 Second VP - Nate Hawkes  
 Treasurer - Richard Landreth  
 Secretary Jim Oates  
 Web Master Tim Quillen

**Key functional support offices:**

Audio-Visual John O’Neil  
 Newspaper Ed. Denny Martin  
 Store Manager Kirk McCauley  
 Librarian Hal Green  
 Food Coordinator Dick Miksad

Attendance: Members: 35 Guests: 1

**The following officer was not in attendance:**

Nate Hawkes

**The General Meeting:**

The meeting was opened and called to order by Tom Evans at 7:05.  
 New member Jason Levinson was welcomed.

**Treasurer’s Report:**

Current club balance is \$877 and a balance of \$660 is in the equipment fund according to Treasurer Richard Landreth

Dennis Hippen announced that Tim Kipps needs any available SJPT punky wood since he has a process to turn it into pen blanks.

Survey forms were available at the meeting and several were collected at the end of the meeting and will be used to plan meetings for the next year. The November program will be multi-station and will include demonstrators Albert and Gary Dale, Miles Everard, Jim Kueck and ???.

**Studio Tours** are November 10 and 11 with Fred Williamson, Dan Hunt, and Nate Hawkes on the tour along with more than 30 other artists.

There will be all day demonstrations at Oasis in Harrisonburg led by Dennis Hippen, Stuart Rockman and others

Richard Landreth presented a safety caution showing two bent tools that had been caught on the jaws of a four jaw vise mounted on a Powermatic

*(Continued on page 4)*



lathe. Use caution when working close to the jaws.

Special thanks to the guys that showed up on the Friday before the Symposium and participated in the clean up afterward on Sunday.

Jimmy Clewes was the featured demonstrator at the symposium and did two great demo's. The attendance was 308 for the two days – a new record for the show. Richard Landreth announced that Peter Welch has resigned from the Symposium Board and the club needs to re-elect a new representative for the next two years to work on the 2014 show. Volunteers were requested.

Denny Martin is stepping aside as newsletter editor and Mars Champaign has volunteered as temporary editor. During the board meeting it was decided to move material to the web site and reduce the size of the newsletter. Again we are seeking volunteers to publish the newsletter.

The December meeting will be moved to the 11<sup>th</sup> to avoid conflicts with other Christmas activities.

#### **Show and Tell:**

**Tom Evans** showed several Box Elder bowls one with natural edge and a SJPT bowl with a crown shaped rim added because the bowl had warped so badly.

**Mars Champaign** showed 2 bottle stoppers, a Poplar pepper mill and a pot-pourri box that had problems with the face plate too large causing screw holes in the piece.

**Elbert Dale** Showed his version of a butter churn requested by a friend, made using a ceramic crock she provided. He had also made a colander stand and pestle for a Florida couple that had seen the newsletter.

**Dennis Hippen** had several Box elder bowls. There were two cored sets and a Jimmy Clewes type vase. He also showed parting tools made from a butcher knife and a stainless table knife.

**Rolf Gebel** presented a pair of Maple candlesticks.

**Jim Oates** showed a three legged Walnut cake plate with a glass dome.

**Charley Conner** showed a large spalted Maple bowl and a smaller Osage Orange bowl.

**Jason Levinson**, our newest member, showed a Red Cedar lidded container and a partially finished Holly bowl along with a natural edge cherry bowl.

**Lew Koogler** showed three Box Elder bowls with good grain that were finished with Poly and wax and a nice Walnut bowl

**Kirk McCauley** showed his latest chess set made from Monticello Tulip Poplar



with a very fancy board. One of his sets is now in the Missouri World Chess Hall of Fame.

Certificate winners drawn were Charley Conner and Dennis Hippen

**Silent Auction:**

The auction rendered \$17.

**Library:**

The following items were added to the library:

**DVD**

Two Lyle Jamison Bowl Basics are now available for loan.

**Demonstration:**

The demonstration was presented by Herman Stutzman who is a member of the Woodturners of the Virginias.

He reviewed an extensive collection of platters of various types since attending the Frank Penta training at the John Campbell School in North Carolina. Samples included several multi axis turning that were truly unique. He also showed platters with feet and several shapes and sizes with various types of texturing.

He mounted the 1.25 inch thick blank using a screw chuck in the top of the platter to make the bottom of the platter first. He stabilized the blank using a large ¼ inch thick washer. He cautioned us to use a jam chuck except when finishing the center for safety reasons. He makes the foot approximately 1/3 the size of the platter and sizes the inner groove to fit his chuck and leave plenty of material for safe clamping when turned to finish the top of the platter.

He completed the bottom by setting a button or jewel in the center. Beads were added in odd numbers to enhance the design. He smoothed the platter with a heavy rounded scraper that produced a smooth surface.

All turning was done between 500 and 600 RPM.

The next club meeting will be Tuesday November 20, 2012 from 7:00 pm to 9:00 pm.

---

If you have tools or equipment for sale or news items for the newsletter, email them to Mars at [mchampaign@ntelos.net](mailto:mchampaign@ntelos.net).



### October Show & Tell Gallery



Tom Evans



Jim Oates



Hippen  
Dennis Hippen



Elbert Dale



Lew  
Koogler



Mars  
Champaign



## October Show & Tell Gallery (Continued)



Kirk McCauley



Charlie Conner



Kirk McCauley



Jason Levinson



Rolf  
Gebel



## Safety First

For a safety Lesson from real life, Richard Landreth showed the two gouges at left as examples of what can happen when one gets overly aggressive in turning. Note how severely bent the two high speed steel tools are as a result of contacting the rotating chuck while aggressively turning wood. Not surprisingly, the turner was painfully injured as well.

### Ervin Stutzman Demonstration Photos Steps in Making a Large Platter

Editor's Note: Those members who want a copy of Ervin's handout can obtain it at our website: [www.centralvawoodturners.org/resources](http://www.centralvawoodturners.org/resources) under "DIY Stuff."

Ervin shows  
some of his  
large platters







### Ervin Stutzman Demonstration Photos (continued)



Large footed platter



Thin footed platter



The mounted blank of stable, kiln-dried, close-grained wood was rough cut round on the band saw. Thickness should be at least  $5/4$ ". Ervin uses a One-Way wood screw in his chuck to mount the blank and puts a large wooden  $1/4$ " by 6-8" washer on the screw between the blank and the chuck.

Round the blank and turn the bottom side of the platter first beginning with the foot.





**Ervin Stutzman Demonstration Photos (continued)**



Cutting a recess to reverse chuck the piece



A possible choice for the foot. Another possibility: a multi-axis turned foot .



Ervin's favorite tool (self-made) for making beads – a 3 sided pyramid point tool.



Sanding the bottom before starting on the top of the platter. He sands ambrosia maple using Enduro-var in a sequence of sand, Enduro-var, sand, Enduro-var, through 8 grits ending at 400 grit.



### Silent Auction



Top left: tools and buffing system acquired by Richard Landreth with his Powermatic 3520 and offered for sale at the silent auction. Other photos: wood available .

### Reminder

**It was proposed at the January, 2011 meeting that members with last names beginning with A to M come early for set up, and those beginning with N to Z stay late to clean up. You are encouraged to do both.**



## Miscellaneous Tidbits

Central Virginia Woodturners is a member club of the American Association of Woodturners (AAW). All officers of a member club are required by the AAW to be members of the AAW. All members of the CVW are encouraged to join the AAW. While dues seem high (\$52 per year for individuals), there are many benefits to belonging. The AAW journal, the *American Woodturner*, is a source of much helpful information for turners and of inspiration. The AAW also provides a series of tips and tutorials in its Fundamental Woodturning series videos available on its webpage at <http://www.woodturner.org/>. It provides resources for basic skills & techniques, published every other month, alternating with issues of the *American Woodturner* journal.

Examples of helpful articles from the *American Woodturner* are:

- 1.) June 2010, "Things I Wish I Had Known When I Was A Beginning Turner " by Jim Echter
- 2.) October 2010: "Sandpaper, The Nitty-Gritty" by Art Scott
- 3.) October 2010: "Humanizing The Skew Chisel" by Ross Fairfield
- 4.) December 2010 "Carbide Insert Lathe Tools" by John English.

There are two particular non-AAW items that I have found extremely useful. The first is an article in the February 2011 issue of *Woodturning Design*, "Keeping Your Lathe in Tip-Top Shape" by Jim Rodgers. It recommends a schedule for care and maintenance of your lathe and has an excellent tutorial on what to do and how to do it.

Second is the book *The Frugal Woodturner* by Ernie Conover published by Fox Chapel Publishing, [www.FoxChapelPublishing.com](http://www.FoxChapelPublishing.com). It tells you how to make and or modify all the tools and equipment you need for turning wood. It is well worth its \$20 price.

---

## 18th Annual Artisans Studio Tour

November 11-12. Meet the talented artisans behind some of Virginia's finest craft. CVW members Nate Hawkes, Dan Hunt, and Fred Williamson are participants.

---

The AAW reminds us that safety is YOUR responsibility

Safe, effective use of a wood lathe requires study and knowledge of procedures for using this tool. Read, thoroughly understand, and follow the label warnings on the lathe and in the owner/operator's manual. Safety guidelines from an experienced instructor, video, or book are a good source of important safety procedures. Please work safely.