



August 21, 2012

In this Issue

President's Corner	Pg 2
Minutes	Pg 3
Treasurer's Report	Pg 4
Show & Tell	Pg 5-13
Silent Auction	Pg 14
Turner's Resources	Pg 16-17
Contributors	Pg 15
Demonstration	Pg 18-30
Shop of the Month	Pg 31-35



Clock by Miles
Everard at SVAC



Bowl by Kirk McCauley
at SVAC



Bowls by Tom Evans
at SVAC



CVW Newsletter - August 2012

President's Corner

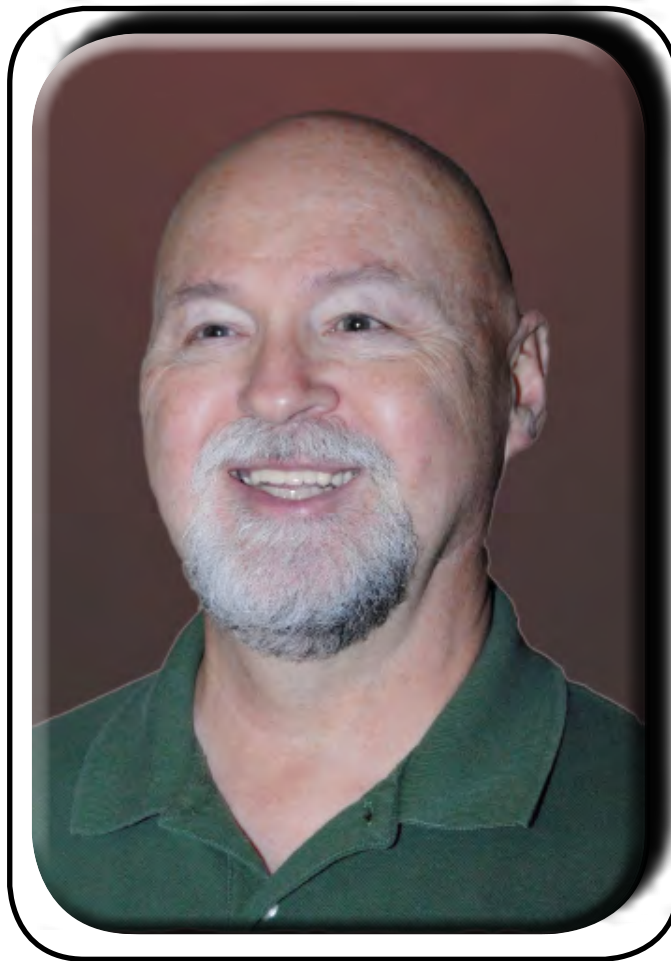
Thank heavens for the rain. My lawn turned green again but mowing is cutting into my turning time. Speaking of time, where has the summer gone? Kids are back in school and grandparents are heading for the shore for some peace and quiet.

We had another great meeting this month, added another new member, and approved the rewritten by-laws. As we sneak up on the Fall months, watch out for those young'ns walking to school, and remember the Shenandoah Valley Art Center's September art show in Waynesboro. We have a standing annual invitation to show case our members talents every September. I am coordinating that effort and I need a lot more pieces. Please call me if you have something to show 540-946-4891. I will be at the SVAC on Wed 9/5 from 9:30am-1:00pm setting

up. There is a reception with light refreshments from 5:00-6:00pm on Thursday 9/6.

Also, The Virginia Woodturner's Symposium is being held 9/15-16 at Expo in Fishersville, just off of exit 91 on I-64. Register on-line at www.virginia-woodturners.com before the end of August for discounted admission, \$30/day, \$50 both days. Registration at the door is \$35/day, \$60 both days. This is a great educational, entertaining and hands on opportunity with many excellent vendors.

Finally, don't forget that there is NO regular chapter meeting on September 18th.



Tom Evans, President

The next regular club meeting will be Tuesday, October 16, 2012 from 7:00 pm to 9:00 pm. The demonstrator will be BIG BOY OR GIRL PLATTERS by Ervin Stutzman from the Mt. Jackson Club. Bring items for Show & Tell, and names will be drawn for the gift certificate giveaway. There will be a Silent Auction, and the Club Store will be open..



August 21, 2012 Minutes
Crimora Community Center
Central Virginia Woodturners Club (CVW)

Officers

President:	Tom Evans
Vice President (Programs):	Dennis Hippen
Second Vice President:	Nate Hawkes
Treasurer:	Richard Landreth
Secretary:	Jim Oates

Key Functional Support Offices

Librarian:	Hal Green
Audio/Visual:	John O'Neil
Newsletter Editor:	Dennis Martin
Web Master:	Tim Quillen
Store Manager:	Kirk McCauley
Food Coordinator:	Dick Miksad

OFFICER'S REPORT

Attendance: 31 (picture count)
Members: 29
Guests: 2

The following officers were not in attendance:
Richard Landreth

The General Meeting:

Tom Evans opened the meeting promptly at 7:00. Don Voas, acting secretary, gave the treasurers report \$1,286 in checking and \$658 in the equipment fund which is the best shape we have been in for a long time.

New members and visitors were welcomed.
New member - Al Hansen who is the new shop teacher at Miller School
Carl Enfield - a guest of Nate Hawkes

Old Business: Tom announced the SVAC Art show and acknowledged the pieces presented and solicited

additional pieces. Items can be brought to the Center September 5 between 9:30 and 1:00pm, but he would like them sooner if possible to plan the set-up. Tom can be reached at 540-946-4891 for additional info or to arrange delivery. The show will run the month of September.

The Virginia Symposium will be held September 15 & 16th in the large building at Augusta Expo and will be a good opportunity for learning about turning as hands-on training will be available. Advance sales at discount are available at <http://www.virginiawoodturners.com> until Aug. 31, 2012.

Friday the 14th we will meet at 10:00 at the community Center to move equipment and tools for the Symposium. Any help is appreciated.

New Anchor Seal has arrived and Tom has a supply at his home near Waynesboro and Kirk has a supply at his home in Charlottesville in between meetings.

New Business:

The by-laws were distributed before the meeting for review. These changes will bring the procedures on how we run the club up to date. It focuses on expense authorization levels and the budget which authorizes planned expenses as well as defining the treasurer's duties.

A motion was made and seconded to accept the Bylaws as written and the vote to accept was unanimous.

Nate Hawks announced that the Powermatic VFD computer acceleration and speeds may be changed using a code and instructions found on the AAW website. It is complicated but a PDF of instructions is available on the website.

Jim Oates, CVW Secretary



CENTRAL VIRGINIA WOODTURNERS CLUB
 MONTHLY FINANCIAL REPORT AS OF: 8/28/2012

\$1,307 OPENING BALANCE

REVENUE/DEPOSITS

Deposited:

- \$15.00 Dues
- \$48.00 Silent Auction
- Demo Entry Fees
- \$434.50 Club Store
- Raffle
- Change Fund
- Other
- Equipment Fund
- Loan
- Donation

\$498 TOTAL REVENUE/DEPOSITS

EXPENDITURES

- \$19.91 Name Tags
- \$2.00 Transfer to Equipment Fund
- \$147.92 Club Store Supplies

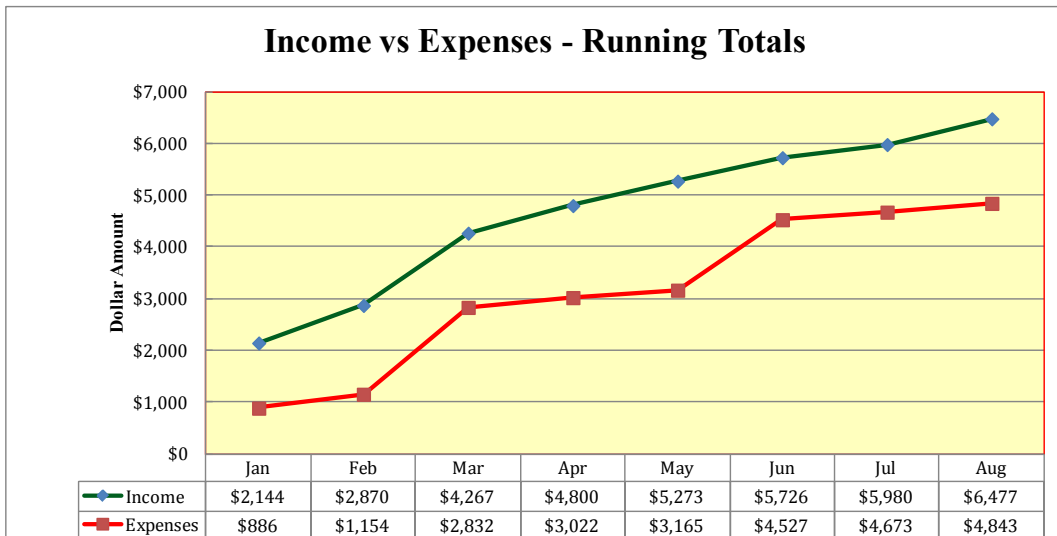
(\$170) TOTAL EXPENDITURES

\$1,634 CLOSING BALANCE Checking Account)

Excludes: \$30 Treasurer's change fund

- \$30 Club Store change fund
- \$660 Equipment Reserve Savings account
- \$720 :TOTAL EXCLUSIONS

NOTE: Totals are rounded to even dollars for ease of reading





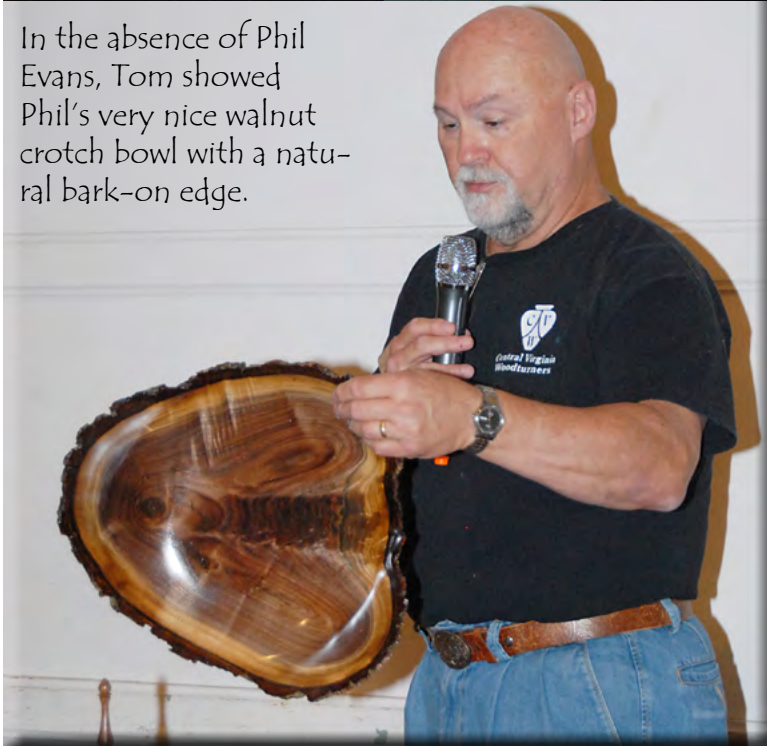
Show and Tell:

Conducted by Dennis Hippen: Members and guests are encouraged to bring their best turnings each month and to share some of the details. Bowls are a common item on display and they showcase the beautiful grain and figure in many woods. Some are augmented with dyes or stains, or they can be carved or embellished in a number of ways. Practical items such as lamps, pepper and salt mills, small boxes and other items are also frequently brought in each month. The variety of talents and products are a constant amazement to anyone attending the meetings. For more information about the Central Virginia Woodturners club and to view previous newsletters simply go to the CVW web site: <http://centralvawoodturners.org/>. A special thanks to Fred Williamson and Dave Rhodes for the considerable effort of taking most of the pictures for this newsletter.



Tom Evans – presented a beautiful Box Elder bowl with a natural edge he had pried from JoAnn’s hands before leaving. This was followed by an impressive Cherry bowl and a Stonewall Jackson Prayer tree vessel and a platter.

In the absence of Phil Evans, Tom showed Phil’s very nice walnut crotch bowl with a natural bark-on edge.





Al Hansen – a new member showed his first turning, a bud vase made under the guidance of Dennis Hippen. Welcome Al.

Sorry Al, but with three photographers contributing to this newsletter somehow we missed getting a picture of your bud vase. I still think the editor should be fired.....editor.



Don Voas – had 2 bowls from the SJPT that were made from cutoffs from large bowls and a cherry bowl that was finished with Dale Winborn's special finish.





Dennis Hippen – set a record on the number of bowls presented with 7 bowls from a Cherry Burl including the faceplate mount filled with turquoise chips. One bowl had exploded. The rest were very nice. He also presented 14 SJPT bowls made from a crotch piece of the tree with many different grain patterns. He also had 4 bowls made from a White Oak “bump” or burl. He topped his display with his iTrainer for spouses, children and cookies – an industrial size rolling pen. He also showed an impressive Ambrosia Maple bark-on bowl and 2 small vessels from the same wood. With all these he brought a Chestnut Oak platter which he claims ate his tools. His improved vacuum stopper seal was made from a Mason jar with a liner form a coffee can to break the seal easily.

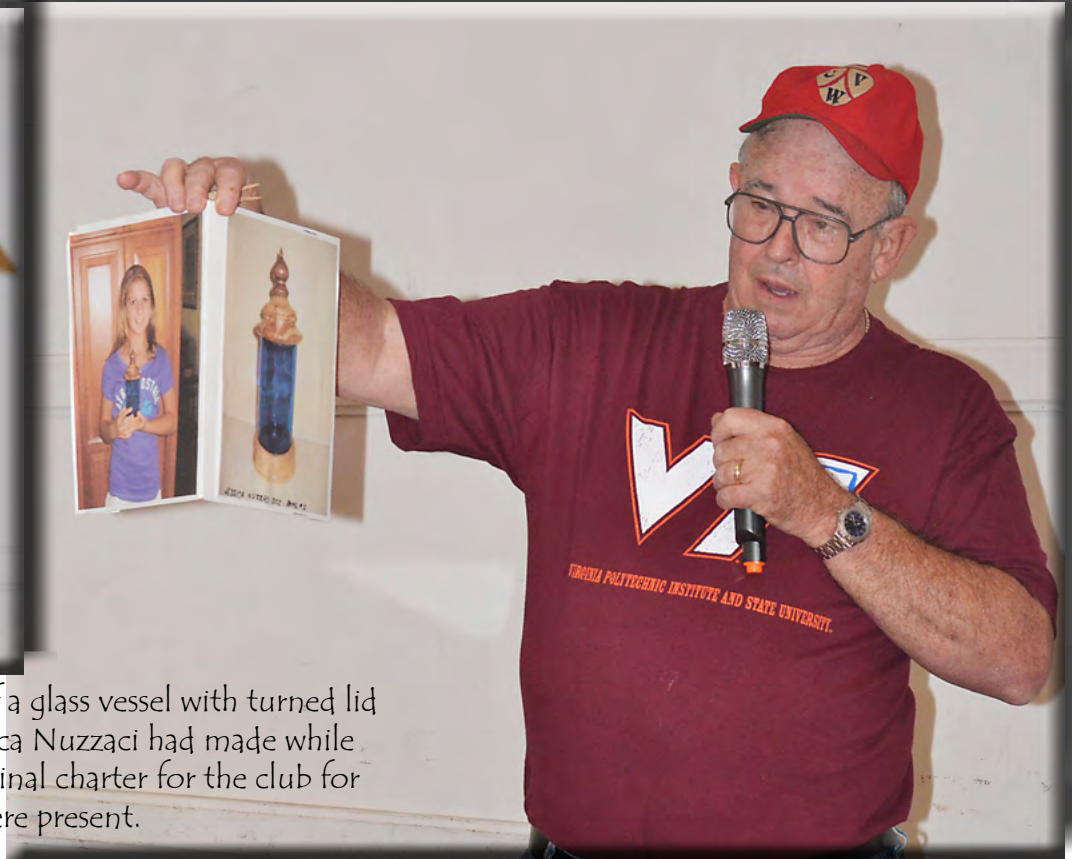




Mars Champaign - brought in a collection of wine stoppers made from Dogwood, Poplar and Maple as well as a few other woods. His 2 potpourri containers had pewter lids he had bought from Craft Supply that were very attractive. Mars gave details on easy rougher replacements from Grizzly: The Grizzly part number for the replacement carbide cutter heads is H7354. They are \$29.95 for a 10 pack. NOTE: These are not listed by Grizzly as replacements for Easy Rougher. They are listed as "replacements for Byrd Shelix cutter heads. If you ask the Grizzly rep for Easy Rougher cutters

he will tell you they don't have them and if you ask for the H7354 cutter heads and tell him you are ordering them for the Easy Rougher he will tell you they aren't for that but are for planers/jointers.





Jim Oates - showed the picture of a glass vessel with turned lid and base his 11 year old niece Jessica Nuzzaci had made while visiting. He also brought the original charter for the club for display. Four charter members were present.

Kirk McCauley - showed his first bowl with a thick bottom and sides made in 2004 and his maple cowboy hat made in 2008 that is so thin light can be seen through it demonstrating that anyone can improve quickly with the right mentoring and tools.

Kirk, somehow none of us three photographers obtained a good picture of your Show & Tell items.....again, fire the newsletter editor.





Charley Conner - Brought in a laminated rolling pen made from a rejected Curley Maple instrument blank and walnut and his first eccentric turning that showed Barbara Dill's demonstration was very effective. He also showed a natural edge maple bowl and a Maple (Box Elder) bowl with bark inclusions.



Charlie, This is a bad picture of your excellent pieces; however, the inept editor didn't correctly set up the white balance on the camera and this was as good as I could make it. Let us fire the editor.....editor.





Roger Chandler – showed 4 bottle stoppers and a SJPT gavel. He had a nicely proportioned figured Ash footed vessel with the lid and foot turned from Walnut.



Charley Wenzel – Had 4 pens made from Ambrosia Maple, Zebrawood and acrylics. He included one blank to show the before. He also had 2 metal framed book-marks with colored resin centers that were highly polished and a bottle opener with a Walnut handle.





Fred Williamson showed a very large Monticello Tulip Poplar bowl with the edge formed from the edge of the rotten center section. He showed how he left the delicate edges thicker for strength during turning and then thinned them out with his sander. He also had a Mulberry vessel and a smaller Tulip Poplar vessel still mounted on the type faceplate he uses to turn. He also explained his early tool rest, banjo with a Volvo motor mount handle and shop made indexer.

Is this a good picture of Fred or what?



Fred brought one of the shop-made pulleys (shives) he made for an earlier shop-made lathe.





Matt Shapiro – Showed a Stanley plane fence for which he had made the handle and fence pad. He also showed a soft Maple maul he made to drive hand chisels and a cherry blank for a rolling pen.



The drawing for the Craft Supply gift certificated was won by Charley Conner and Jim Oates.



Silent Auction

The Silent Auction functions as a means for those that have too much wood to share it with those that could use pieces to turn. Maple, Cherry, Montecello Yellow Poplar, Oak, Walnut, Memosa and other species regularly are available. The bids provide additional needed income for the club. Often nice pieces sell for only \$1 - \$5. Members have a long history of sharing their valuable wood supplies.



A large variety of wood was available for the silent auction along with a cart filled with donated wood that is available for a contribution to the club. A total of \$24 was received from those that bid on pieces of wood.

Don Voas managed the wood auction. The auction rendered \$38.

Turners Resources.....by Editor

Reminder: IT WAS PROPOSED AT THE JANUARY, 2011 MEETING THAT MEMBERS WITH THEIR LAST NAMES BEGINNING WITH A TO M COME EARLY FOR SET UP, AND THOSE BEGINNING WITH N TO Z STAY LATE TO CLEAN UP.

You are encouraged to do both.



Contributors Section

This is a new section of the newsletter that will be dedicated to articles, emails, and topics that are provided by our membership. You are encouraged to write articles, product or tool reviews, make suggestions about club meetings or the newsletter, or provide pictures and some text about something or someone that interests you. I would be most pleased to help in any way, including the photography or writing or with suggestions on topics. Please give me a call or send an email to Denny Martin (540-337-7716 or ursus@mgwnet.com)....editor

From the AAW

It's Your Turn 3

September 15-16, 2012
Expoland - Fishersville, VA

AAW Chapter woodturning Clubs of Virginia host the 2012 Woodturning Symposium "A hands-on woodturning experience" on September 15 and 16, 2012 at The Expoland Exhibition Center, Fishersville, VA. This bi-annual symposium continues to lead the way in regional woodturning symposiums. It is your chance to step up to the lathe and have a mentor guide you as you do the turning.

This year our featured demonstrations will be given by Jimmy Clewes on Saturday and Sunday and by Brian Noble-Marx on Saturday. In addition to the traditional demonstrations, there will be 11 stations with talented VA turners guiding you in areas of their expertise as you do the turning at the lathe. You will find more information about the symposium in our brochure.

Registration is now open and we hope you will join us. Visit our website for complete details and on-line registration.

Contact Peter Toch at ptoch@comcast.net for more information.

Have you checked out AAW's FUNDAMENTAL WOODTURNING?
Great tips and tutorials are available at: http://www.woodturner.org/community/fundamentals/?utm_source=Newsletter+%239&utm_campaign=newsletter+%239&utm_medium=email
Submitted by Denny Martin



Buy & Sell Section

Buy & Sell Section: This space will be dedicated to featuring things that are for sale (i.e., tools, lathes, wood, turned items) or things that members are seeking to purchase. Please submit the items you wish to sell with any pictures prior to the publication of each newsletter. Because the newsletter completion date is so variable I suggest you call or email the newsletter editor with your information. Ads are usually run for two months. If you are seeking to purchase something and want to advertise in this venue please submit a written description to the editor:

Dennis (Denny) Martin, 272 Buffalo Branch Ln., Swoope, VA 24479
540-337-7716 ursus@mgwnet.com



This tape was found at one of the CVW work sessions or meetings. Is it yours? Contact Tom Evans if you are missing this practically new 16' measuring tape. Tom's home number is: 540-946-4891



Buy & Sell Section

Turners Resources.....Continued

For Sale by Fred Williamson - I have a Bridgewood 15" planer for sale, basically the same as an older Grizzly G0454, purchased in 1986 and used in my home business. It's has a 2 HP motor, wired for 220 V, and a customized side discharge shavings hood for the dust collection system. Runs fine, just replaced it with a 20" planer. Email (fred33@embarqmail.com), or call 434-823-1882.



Sorry,
this item
has been
Sold

Demonstration: Shop-Made Tools

Tools by Denny Martin, Don Voas, Pete Johnson
Charlie Conners, Kirk McCauley & Fred Williamson

Denny believes anyone can make tools and some will be quite usable and others will be a learning experience, but will be cheaper than buying new tools. In some cases they may convince you to buy a professionally made tool. He demonstrated many variations of calipers



he has made and an extremely interesting magnet mounted caliper to measure the depth of a bowl. The aluminum calipers were originally used to measure bear heads and are now repurposed to a tamer use. Many of his tools are customizations of commercially available tools to make them more user friendly. His carbide tips on tools are oriented for maximum performance and are especially adapted for weight and stability. He encouraged others to make their own carbide-tipped tools, and offered to help others.



Denny showed shop made vacuum chucks made from PVC pipe and couplings mounted in a 2X circle using a nut embedded and epoxied into the wooden base. Gaskets can be made from surgical tubing or closed cell packing foam.

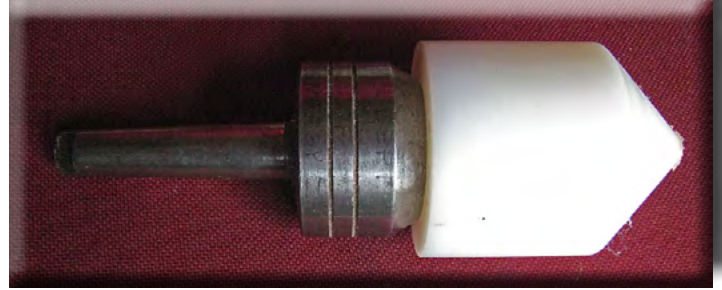




Denny showed a negative-rake scraper he created after seeing one made by Bob Vaughan in Roanoke. This would be a fairly easy and functional tool for club members to make.



His high molecular weight urethane bull nose was turned on a wood lathe and fit snugly on a revolving center.



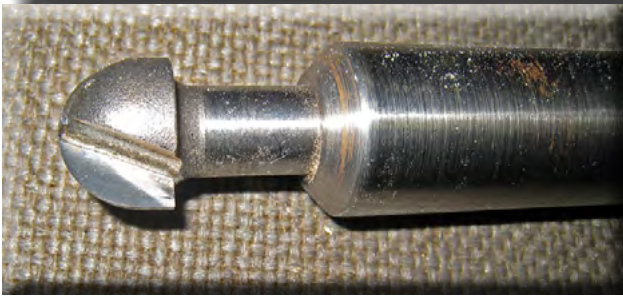
He also showed a keyless chuck made from drill rod and a mild steel shaft with a flat notch to allow the drill rod to move enough to lock the work.





A simple boring bar is one of the most easy and most versatile of any shop-made tool. Various cutters and scrapers can be created and easily installed in the basic bar. Drilling a hole in the end with the wood lathe and then drilling and tapping another hole in the side with a set screw is easily assembled.

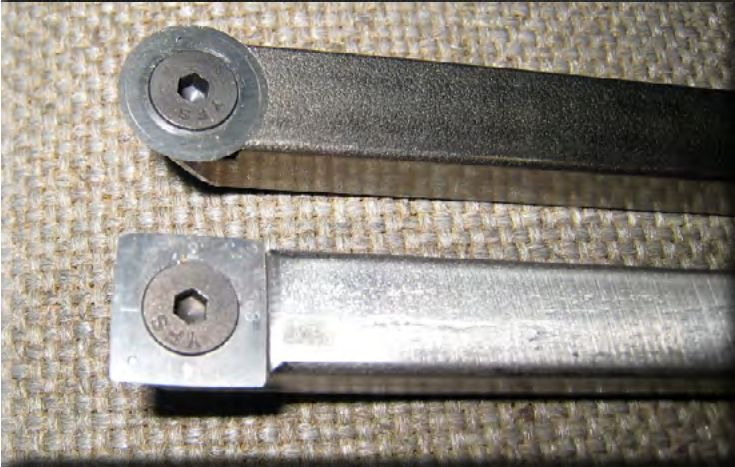
Members with a MEPS torch and a welder should be able to make curved tool rests with different radii.



This boring bar with a 1/2" round router bit didn't work well and isn't recommended.



Easy Rougher-type tools can be fairly easily made with the appropriate drill bits and taps and cap screws. Although Denny mills slots in which to mount the carbide cutters, these can be mounted on the surface and most likely would work as well.

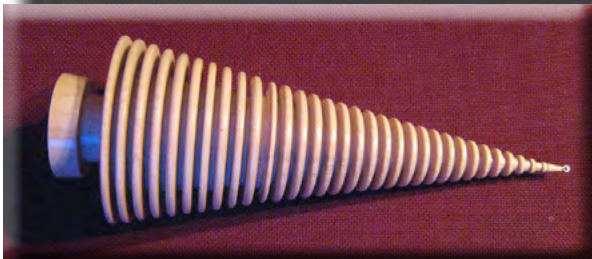


Another simple tool to make is a parting tool rest of Fred Williamson's design (see his AAW article), which is a much better design than Denny's cove at the other end of this 1: cold-rolled steel shaft.



Denny made a small tool insert to sharpen the 1/4" HSS cutters that fits into his Oneway Wolverine sharpening jig..

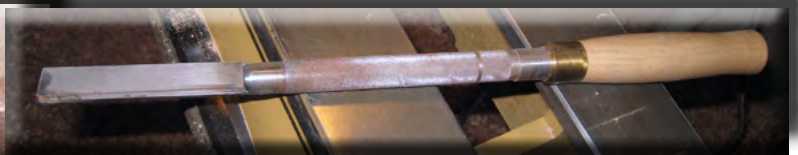
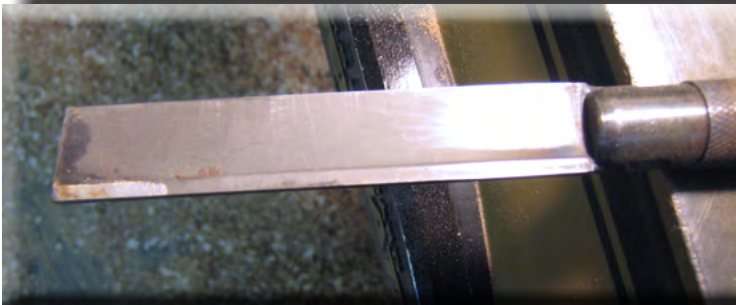
A small bead cutter was easily made for the small boring bar to make a Christmas tree decoration



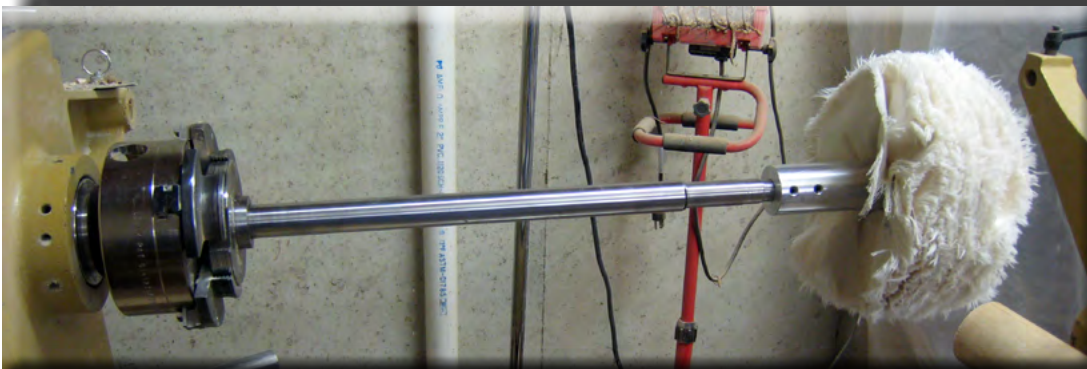
Denny made a tailstock piece to mount the chuck so he could reverse a bowl and place centered on his vacuum chuck. These aren't easy to make. Someone sells better ones that will have a bearing installed to allow them to turn with the bowl.



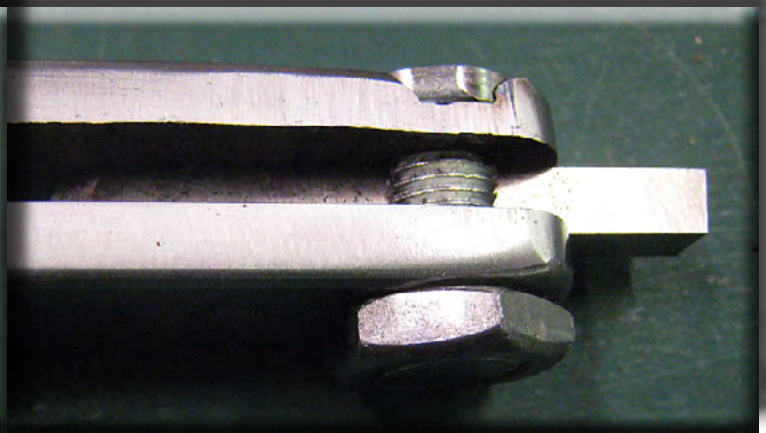
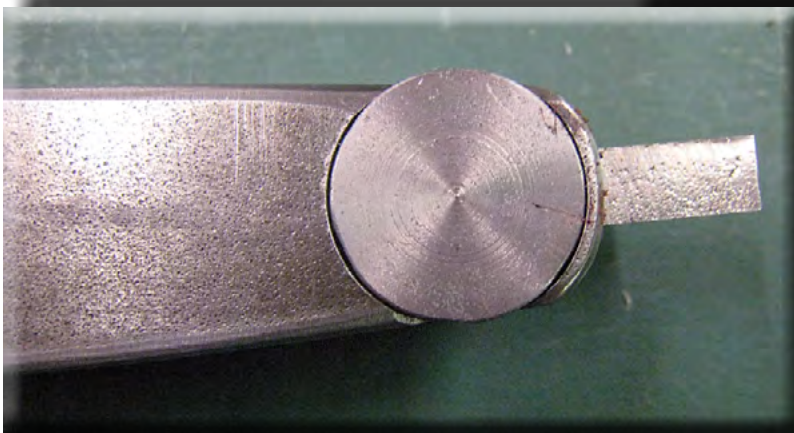
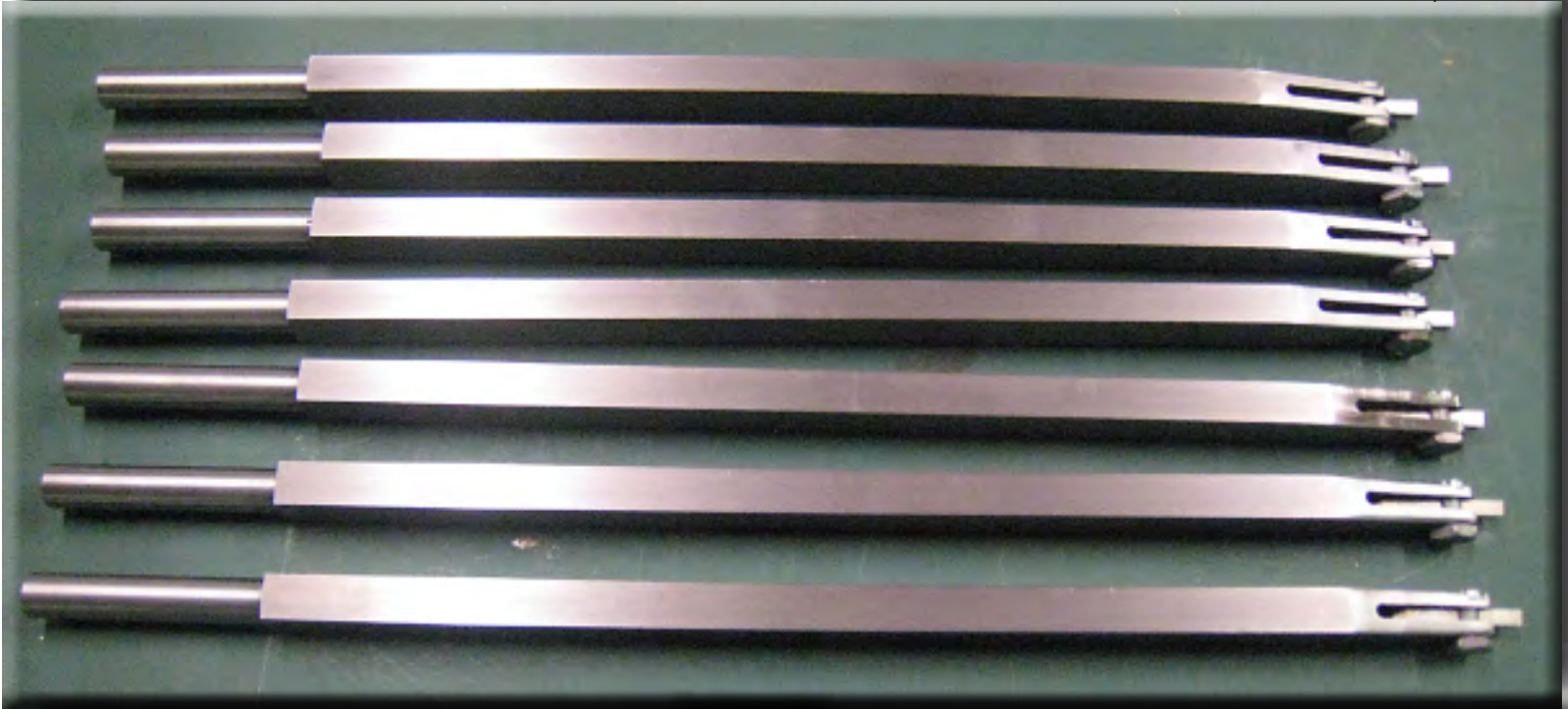
Perhaps two of the easiest tools to make are a compass with a Sharpie clamped to one end and a simple scraper out of an old file. Be aware that when grinding a file the metal becomes softer under the surface. The file tip can be re-hardened with a little practice. Hardening was covered in a previous demonstration.



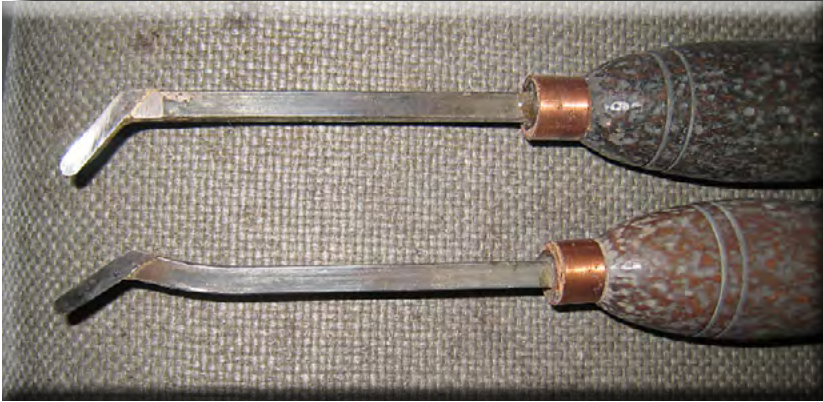
Welding a metal lathe cutoff tool with a carbide tip onto a round bar made a parting tool that rarely if ever needs sharpening. The carbide is tapered on the sides and cupped in the top so that only the leading edge actually touches the wood as it cuts. It creates a fine finish. However, it is a hardened tool and the blade can break if dropped (I know from experience). HSS cutoff tools are also available and less expensive.



An old horizontal mill arbor was used to make a shaft to mount in Denny's Stronghold chuck. Grooves were cut in the head to ensure a secure fit. The end was turned to fit the bracket that came with the Beall Buffing System. When installed Denny brings up the tail stock and live center to insure centering. This system has performed well and prevents practically all metal contact with a bowl or other turnings when buffing.



Denny believes the best tool he has made is the large boring bars and has made several for other turners. He makes two sizes [medium (24") and large (34"), weighing 4.5 lbs. and 12.5 lbs. respectively]. These boring bars were developed with Fred Williamson and are variations on the theme that Bob Vaughan in Roanoke and others have made. Using a vertical mill, metal lathe and metal cutting band saw, these tools have proven to be effective on both large and small bowls and hollow forms. Normally used with a simple 1/4" HSS cutter, a cupped carbide cutter and a scraper attachment have been developed.



Created by a turner at a demo, these small hollowing tools are used to make the globe Christmas decorations. They are simple to make. Small 1/4" HSS cutters are brazed to 1/4" cold-rolled steel and bent to the desired shape and a handle turned and installed.

Kirk also makes an excellent boring bar that is more easily constructed than those made by Denny. He simply makes a shallow groove in the end of the bar to accept the 1/4" HSS cutter and drills a hole and threads it to accept a set screw. This firmly keeps the cutter in place.

Kirk McCauley showed us a different approach to mounting bits on a heavy boring bar. He also showed a scraper bit good for clean-up in the bottom of large bowls and band saw blades bent into a "V" for finish drying. He brought thin plywood circles he uses as a pattern for making natural edge bowl blanks and a shop-made capture system for hollowing. Kirk makes "bumpers" with carpet padding mounted on a plywood circle and a square mount for his 4 jaw chuck he uses to clean up bowl bottoms.



An excellent wood turner and wood worker, Kirk McCauley is adept at metal working and has made many of his own tools. Among them he made his own capture hollowing system from scratch that includes a curved piece that allows him to reach under the rim of hollow forms.



Kirk makes a simple tool for turning the base of bowls by using a small square block attached to a round wood disk and covered with carpet or carpet padding. By keeping it in place with the tail stock and live center, he can turn the base and leave only a small tip of wood to be removed and sanded after the bowl is removed from the lathe. Besides his long and strong boring bars (one with a scraper), Kirk uses a untra-simple to make bent piece of band saw blade to set a bowl on to dry. He testifies that it won't leave marks on the bottom using Salad Bowl Finish. The picture a left shows his shop-made capture hollowing system, which can be made with a welder and torch.



Charlie Conners was nice enough to bring three shop-made tools: (1) he had made a thin parting tool by welding a metal parting tool to a round shaft; (2) he attached a small round carbide cutter to a square piece of cold rolled steel; and (3) he replicated the Easy Rougher curved hollowing tool for hollow forms. Charlie has worked with metal for years and enjoys restoring farm tractors and modeling.



Don Voas brought in several shop-made tools including these 1" round tool rests made by a member of the Mt. Jackson club.

A carbide tipped tool made from a rock drill rod that Don made didn't function well. The 1" end of the tool was solid carbide.





Among the several tools Don brought included a coffee bean crusher out of piece of pipe and a metal rod with a handle to use coffee beans to fill holes (from left to right above), two small boring bars with one that has a Jamieson 3/16" carbide cutter, a wood holder to sharpen the 1/4" HSS cutters, a simple round tool with a point ground in the end, parting tools made from a knife blade, a metal cutoff tool and a hack saw blade, a turning tool with insulating foam handle, a simple round tool with which was cut at an angle and a wood depth gauge. Don also shared a texturing tool made from a kit that accepts small Dremel tools. The kit can be purchased from Highland Hardware.

Don Voas – showed knurling tools made from a carbide Dremel tool as well as a unique inlance making mortar and pestle for grinding filler for turnings. He had two different sets of tool rests (some with hardened edges),

Don has made several tools that accurately space the golden ratio for furniture and wood turning design. To learn more about this tool go to: <http://www.goldennumber.net/do-it-yourself/>



For some silly reason Fred refused to bring in his shop-made lathe and his band saw that he made from plywood and other parts. If you want to see other shop-made tools and systems take any opportunity to visit Fred's shopEditor.



Fred's amended version of Jamieson's carbide cutter

Fred Williamson showed us how to use a wooden adjustable support for stability in turning large bowls with large boring bars. Fred brought a shop-made coring cutter for his McNaughton coring system by grafting (brazing) a cutter onto metal he had molded around a curved form that was surfaced with metal. He brought shop-made face plates that he and Elbert Dale had fabricated, shop-made boring bars of several types and a tip tool of his design. Fred is experimenting with the small 3/16" carbide cutter made by Jamieson by mounting the cutter at different angles.





Pete Johnson of the WToV club in Mt. Jackson loaned several tools for the presentation, including a simple-to-make wooden depth gauge, a plywood circle with rings to center a bowl to turn the bottom, a device to insert into a hollow form for bottom turning, and a simple sanding system for hollow form interiors.

Editor's Note: I very much regret not getting more pictures of the tools that were provided by Kirk, Fred, Don, Charlie and Pete for the meeting. Although Both Fred Williamson and Dave Rhodes did a great job of filling in as photographers, with so many contributions I failed to take the pictures I would have liked after my short presentation. I hope the next editor will do a better job.



This is only one of two tables of shop-made tools that were brought to the August 21 meeting.

Shop of the Month – Pete Johnson

by Denny Martin

Pete Johnson is an active member of the Woodturners of the Virginias club in Mt. Jackson. He lives in a house he and his bride, Pat, built in a patch of woods near Quicksburg, which is southwest of Shenandoah Caverns, north of New Market and southwest of Mt. Jackson. I defy you to find his place, even using the latest GPS technology, without calling to get directions. An enthusiastic, gifted turner, Pete always has some innovative turning tools and methods that he is willing to show visitors or anyone willing to stand still. Pete, Hank Marien and I were asked to give a demo of shop-made tools to the Mt. Jackson club a couple of months ago, and as I prepared for a similar demo for the CVW club I called Pete to see if I could talk him into helping and bringing some of his creations. A similar request was made of Hank. Pete couldn't attend, so he agreed to loan me some tools to show the CVW gang. Hank had planned to attend, but had a last minute conflict.

I called to arrange a time for me to pick up the tools I wanted to borrow and asked if I could take pictures of his shop. I found Matilda (our GPS) and with directions Pete provided, and I invited my friend Jim Jones to go along for the 60 minute trip as protection and to provide his copious amounts of criticism of everything from my driving to my ability to pay attention to Matilda.

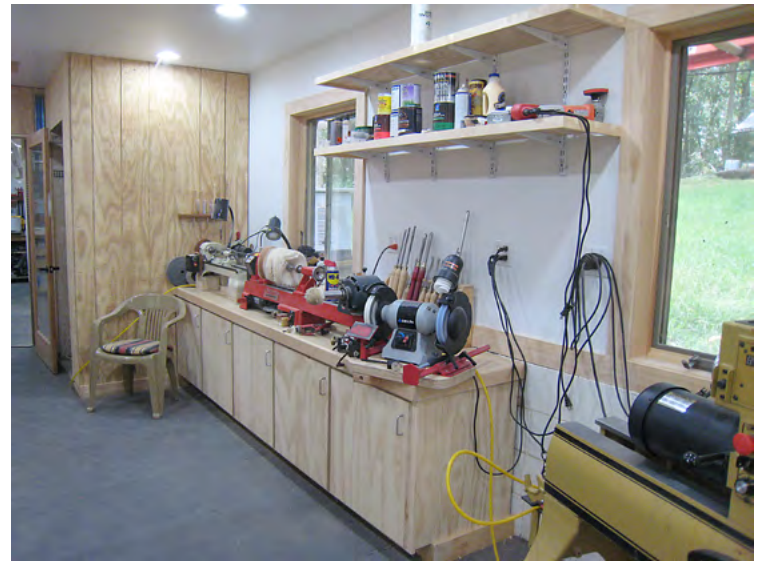
Pete is nearly finished building a nice addition to his workshop, plus a large attached porch. He showed Jim and I around. Although not considered a large shop, the addition added much more cabinet and table top space and a lot of sun light from several windows and a door. Pete is going to enjoy this addition, especially this winter.

With all the money Pete spent on the new shop addition, he has been unable to purchase a real pair of normal britches. Donations are being accepted.





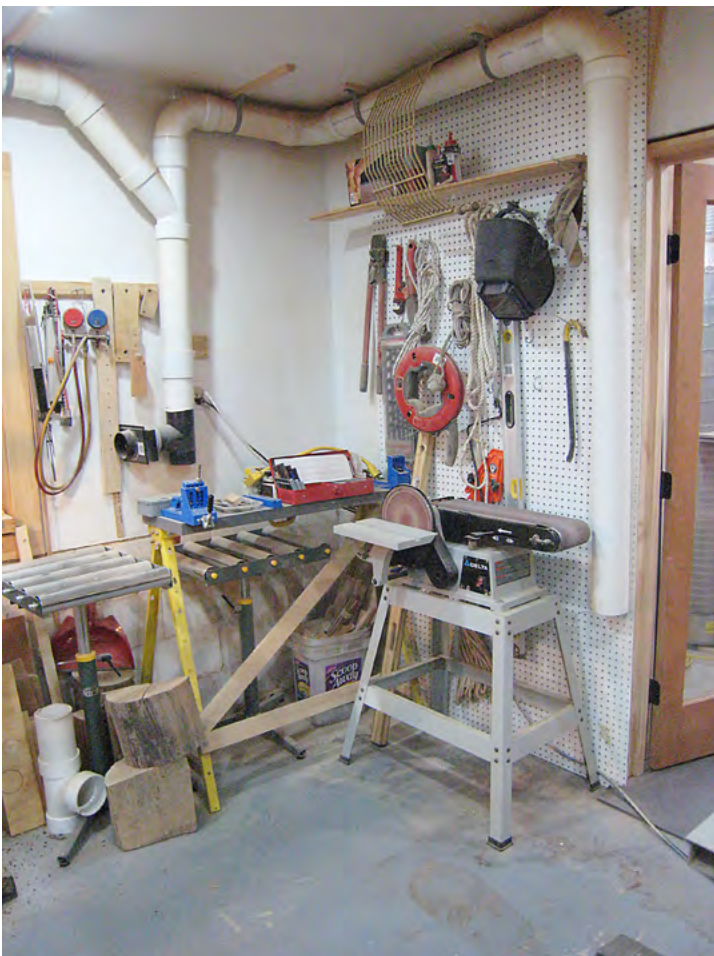
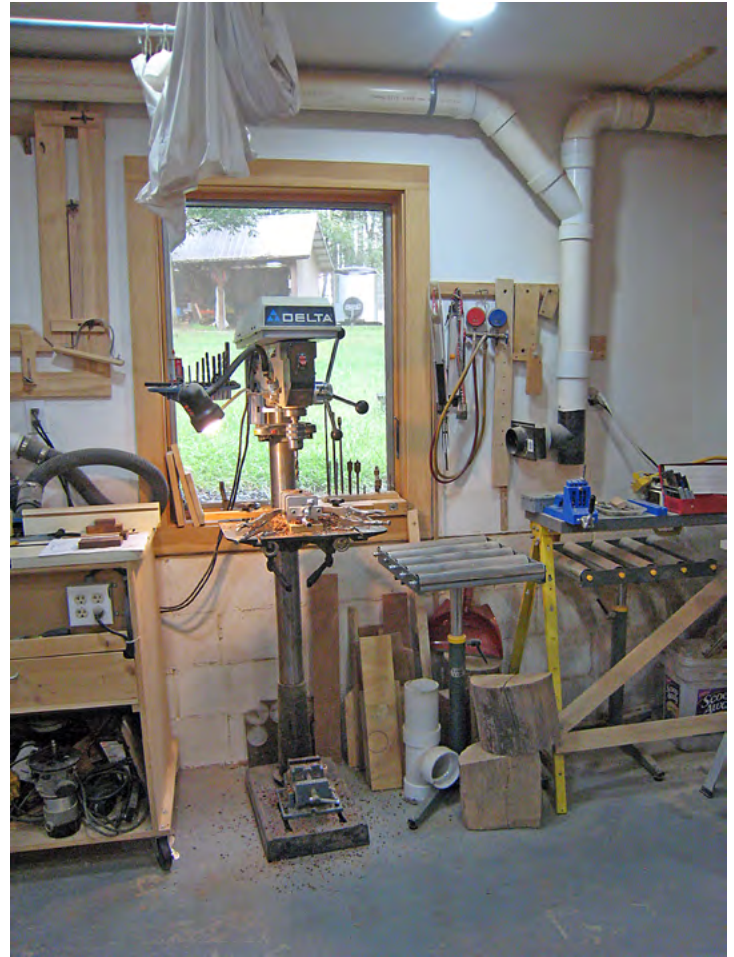
Most of the new addition is dedicated to his lathes (3) and tools, although a small room houses at one end of the new addition houses his dust collection system.





Traditional wood working tools were relegated to the original shop area that was small and contained their washer and dryer, but it was well arranged and had a large work table and table saw in the center. The gal in the blue shirt (above) is my bride, Carole, that was kind enough to ride along when I returned the loaned tools.







It has been said that a clean, neat shop is the product of a troubled mind. If so, I see considerable professional counseling for Pete in the near future. Tools were strategically placed, in their place or in drawers. You can see his electrical needs were well thought out. Make note that the dust collection vents were hidden, and the floor was covered with soft, interlocking panels that results in less tired feet and legs at the end of a long turning day.



Several bowls graced the new shop addition in various stages of being finished. It is clear Pete knows how to peel away wood and create exceptional bowls and hollow forms.

If you get a chance to visit Pete & Pat and see his shop, I know you will receive a warm reception and an invite to return.....editor.