



Largest & Smallest  
Bowls by  
Jim Oates



Spalted Maple  
Platter by Fred  
Williamson

Items by  
Matt Shapiro



## June 19, 2012

### In this Issue

President's Corner	Pg 2
Minutes	Pg 3
Treasurer's Report	Pg 4
Show & Tell	Pg 5-10
Silent Auction	Pg 11
Turner's Resources	Pg 12-13
Available Wood	Pg 12-13
Buy & Sell	Pg 16
Contributors	Pg 15-16
Demonstration	Pg 17-29
Shop of the Month	Pg 30-36



Silver Maple Platter  
by Nate Hawkes



## CVW Newsletter - June 2012

### President's Corner

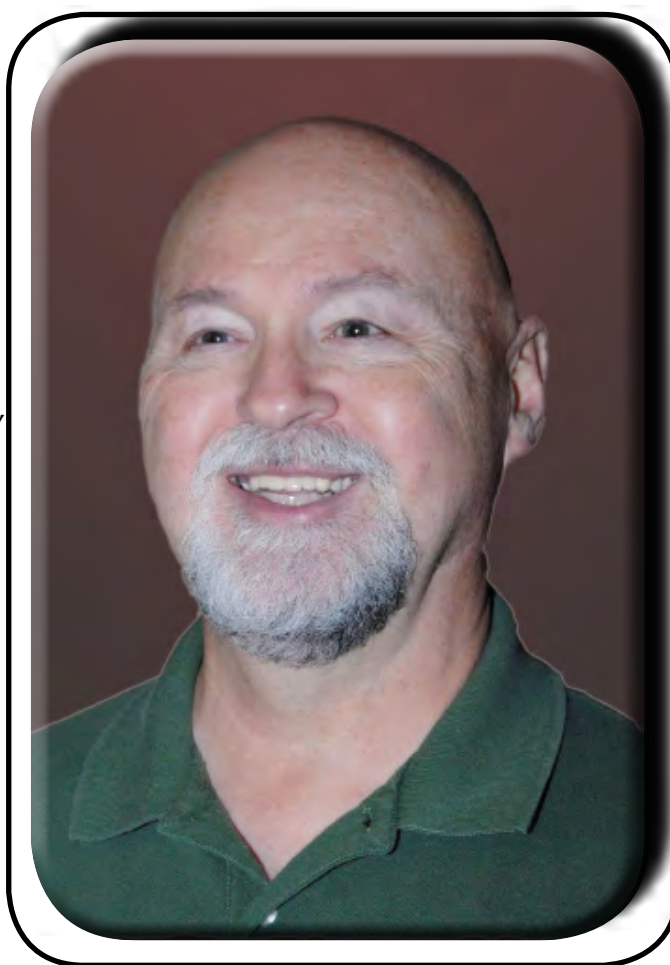
As usual, Fred Williamson provided you with another entertaining and informative demonstration of hollow form turning at the June meeting. I especially liked his little rake to clean out the turning debris. Fred is a natural teacher with his pleasant personality and endless knowledge and turning experience. Our club is extremely fortunate to have members like Fred.

Adding to the evening's enjoyment, our members authorized the expense of \$200+/- to purchase materials to construct a heavy duty wheeled cart to hold the Community Center's folding tables. The existing "table cart" seen at the Center is actually intended to hold the Center's folding metal chairs. Sometimes the folding tables are scattered about the building requiring many trips back and forth to get them to the front room.

Our club benefits directly with a cart dedicated to the tables. A collateral benefit is that other groups using the building can use the cart- our

way of expressing our continued gratitude for having such a wonderful place to have our meeting and securely store all of our equipment for a minimal rent.

During the evening, following the purchase approval, Mr. Scott Childress, a guest, and owner of Industrial Fabricators in Fishersville approached me and offered to donate all of the steel needed to build the cart. Elbert Dale then volunteered to cut, weld, and paint the cart. Our only expense was \$55+/- to purchase heavy duty casters. I expect that the cart will make its public debut at the July meeting. I hope to see Scott at the July meeting. Please thank him and Elbert for their generosity.



We have a guest demonstrator for the July meeting. Lets support him with

a good turn out.

Keep turn'n & be safe, Tom Evans, CVW

The next club meeting will be Tuesday, July 17, 2012 from 7:00 pm to 9:00 pm. The demonstrator will be Dale Winburn who will demonstrate turning pepper and salt mills. Bring items for Show & Tell, and names will be drawn for the gift certificate giveaway. There will be a Silent Auction, and the Club Store will be open..





June 19, 2012 Minutes  
Crimora Community Center  
Central Virginia Woodturners Club (CVW)

Officers

- President: Tom Evans
- Vice President (Programs): Dennis Hippen
- Second Vice President: Nate Hawkes
- Treasurer: Richard Landreth
- Secretary: Jim Oates

Key Functional Support Offices

- Librarian: Hal Green
- Video Crew: John O'Neil
- Newsletter Editor: Dennis Martin
- Web Master: Tim Quillen
- Store Manager: Kirk McCauley
- Food Coordinator: Dick Miksad

OFFICER'S REPORT

Attendance: 38

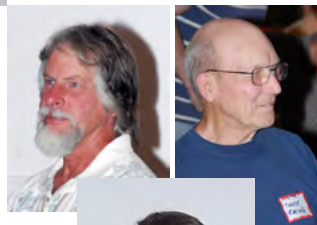
The General Meeting:

The Meeting was opened promptly at 7:00 by President Tom Evans who introduced Treasurer Richard Landreth who welcomed and introduced our visitors:

- Ron Moses
- Branden Robinson
- Chuck and Barb Ewing
- Bobbie Champaign
- Scott Childress
- Jason McKown
- Adrianna Arbo-Yak



He also introduced our newest member Stuart Mercer



Treasurer's Report:  
Current club balance is \$1479 and approximately \$650 in the equipment fund.



There are currently 72 members.

Dennis Hippen Passed around an article featuring Fred Williamson in Abode Magazine. He also announced that Blue Ridge Woodturners Wednesday Jun 20, 2012, from 7 PM to 9 PM will have a Hollow Vessel Demonstration by Steve Antonucci who will demonstrate the ins and outs of hollow form turning; talk about the do's and don'ts and make a medium sized vessel. Steve does beautiful hollow forms.

Roger Chandler will demonstrate at Woodturners of the Virginias on July 7.

Elbert Dale announced that there is a going out of business sale to be held at Barnes Lumber Company in Crozet on the 27th of June. More information can be found by going to ([http://www.hatauctions.com/auction5\\_upcoming.htm](http://www.hatauctions.com/auction5_upcoming.htm))

New Business: Tom presented a proposal to build a mobile rack for tables out of angle iron for moving tables for set-up. The motion was made to proceed and was seconded and accepted. Elbert Dale volunteered to coordinate the construction and Scott Childress volunteered to donate angle iron to construct it.

John Dillon announced he had a Powermatic double bag 220v., 3 hp, 1 phase dust collector for sale for \$700.

Mars Champaign gave us an update on determining if his Powermatic Lathe would cause problems with his Boston Scientific pacemaker. Boston Scientific generously conducted experiments with his specific type of pacemaker and determined he could safely turn unless he got carried away and hugged the motor while it was running. Good news for turners with bionic parts.

Last month's certificate winners - Charley Wentzel and Hal Green were forgotten but will get a \$20 certificate next meeting

Dennis Hippen recognized Bert Smith, a charter member of CVW, and his Nephew Witt. Bert has instructed many of our beginner wood turners.

Jim Oates, CVW Secretary



CENTRAL VIRGINIA WOODTURNERS CLUB

MONTHLY FINANCIAL REPORT AS OF: 6/20/2012

\$2,107      OPENING BALANCE

REVENUE/DEPOSITS  
 Deposited:  
 \$25    Dues  
 \$24    Silent Auction  
          Demo Entry Fees  
 \$398   Club Store  
          Raffle  
          Change Fund  
          Other  
          Equipment Fund  
          Loan  
 \$6     Donation

Editor's Note: If you have looked at the Monthly Financial Report in recent months you have seen some impressive changes. The graph is a new and valuable addition. If you get a chance to thank Richard Landreth, our Treasurer please don't miss the opportunity.

\$453      TOTAL REVENUE/DEPOSITS

EXPENDITURES  
 \$30    Cost of Domain name for 2 years  
 \$150   2 year web site hosting cost  
 \$448   55 gallon purchase of Anchor Seal

\$712   Club Store  
 \$20    CD for Demos  
 \$2     Transfer to Equipment Reserve

(\$1,362)      TOTAL EXPENDITURES

\$1,199      CLOSING BALANCE      Checking Account)

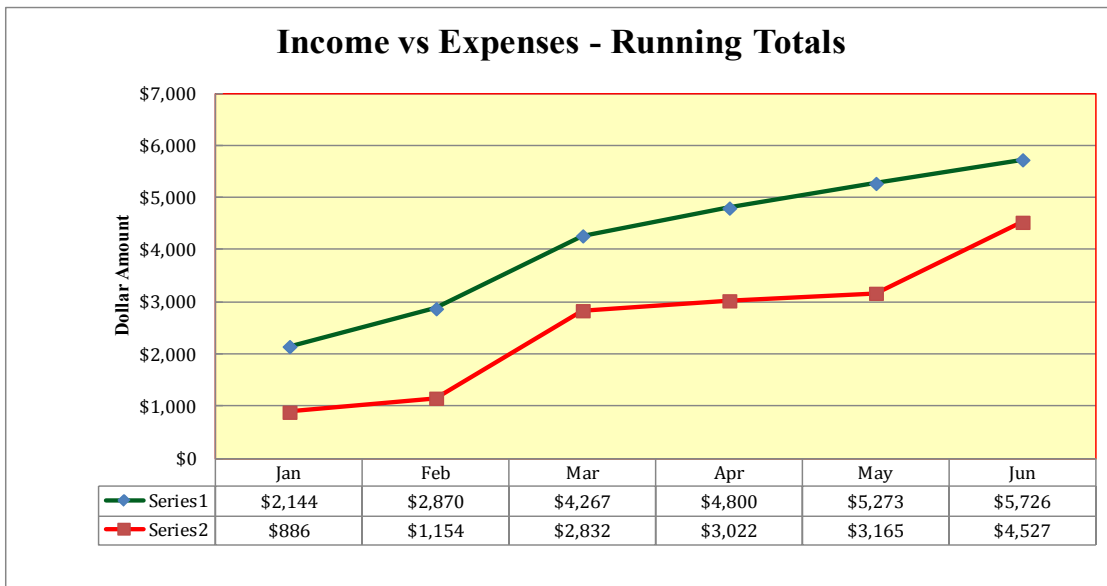
Excludes:                      \$30    Treasurer's change fund

   \$30    Club Store change fund

   \$658   Equipment Reserve Savings account

\$718    : TOTAL EXCLUSIONS

NOTE: Totals are rounded to even dollars for ease of reading







# Show and Tell:

Members and guests are encouraged to bring their best turnings each month and to share some of the details. Bowls are a common item on display and they showcase the beautiful grain and figure in many woods. Some are augmented with dyes or stains, or they can be carved or embellished in a number of ways. Practical items such as lamps, pepper and salt mills, small boxes and other items are also frequently brought in each month. The variety of talents and products are a constant amazement to anyone attending the meeting. For more information about the Central Virginia Woodturners club and to view previous newsletters simply go to the CVW web site: <http://centralvawoodturners.org/>

Dennis Hippen explained how he was able to turn 10 bowls and 3 platters from one 15X15X17 inch block of Stonewall Jackson Prayer Tree stock. There are 2 cored sets of one with 5 bowls and another with 3 bowls. With the knots, holes and warping they did not immediately appear to be a series from the same stock. He also had to repair several cracks since this wood is very prone to cracking but with colored filler he made them appear to be part of the design. His three platters had very attractive grain and were nicely finished. Dennis a very good and prolific turner.







Roger Chandler showed us five closed vessels with a good variety of styles. He has used Ash, Mahogany, Box



Elder, Spalted Maple, Walnut and Cherry to make contrasting lids and finials for his boxes and finished them with General Finishes Woodturner's finish since it is both attractive and fast.



Starke Smith presented the latest products of his coring system and a nice walnut and maple candle stand made using his Elsworth bowl gouge. He produced three Ambrosia maple bowls in a tapered form with attractive grain and a Mimosa bowl with an extremely small base and attractive taper. He also showed a Curley Maple bowl that showed the flames and curls very well.







Bruce Stilwell showed his Box Elder and Chinese Elm bowls that were recently turned and finished.



Melton Estes showed a fine grained Cherry dish and a white Holly bowl. His third bowl was cut from a piece of stump he had kept in a paper bag and the blank was covered with green mold. All traces of the mold were gone but it probably contributed to the grain high lights in the piece







Jim Oates brought in his largest bowl to date made from Red Maple from Denny Martin's stock of wood, and also showed in contrast the smallest bowl he has made from a series created for a friend in the miniature furniture business.



Matt Shapiro presented a wine bottle stopper and an ice cream scoop made from Cocobolo and a measuring scoop made from a Mexican wood. He also showed several tops he had made practicing with his skew following the demonstration last month by Elbert Dale. He has been mentored by Richard Landreth and is progressing very well.







Fred Williamson reminisced about a Sturbridge Village glass craftsman who made flowers in glass but did not pass along the technique. When he died, the craft was lost but he is proud to see the development of talent at CVW to assure knowledge is passed on as demonstrated by Show and Tell pieces. Fred produced a very thin and highly figured Monticello Sugar Maple platter and a Monticello Poplar bowl made from the second Poplar which has now been dated to 1808. It was definitely around in Jefferson's lifetime. He also showed an attractive Monticello sugar Maple bowl. Fred has certainly contributed much to Monticello through his efforts to preserve wood from the gardens. Fred also showed some "carbonized poplar" blanks made by exposing the wood to high temperature and making it very durable in exterior applications. It had a dark brown look that is very attractive.



Nate Hawkes brought a nicely finished cherry bowl from a tree at Paul Pierce's house and a second end grained cherry bowl with half-moon shaped stress cracks formed by wind stress on a dead tree. He also showed a large bowl made from spalted Red Maple burl with a natural edge and a large Silver Maple platter.

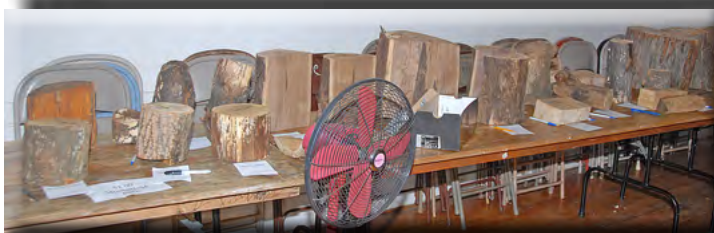


Show and Tell certificates were won by Jim Oates and Bruce Stilwell.





The Silent Auction functions as a means for those that have too much wood to share it with those that could use pieces to turn. Maple, Cherry, Montecello Yellow Poplar, Oak, Walnut, Memosa and other species regularly are available. The bids provide additional needed income for the club. Often nice pieces sell for only \$1 - \$5. Members have a long history of sharing their valuable wood supplies.



## Silent Auction

A large variety of wood was available for the silent auction along with a cart filled with donated wood that is available for a contribution to the club. A total of \$24 was received from those that bid on pieces of wood.

---

### Turners Resources.....by Editor

---

*Reminder: It was PROPOSED at the JANUARY, 2011 MEETING THAT MEMBERS WITH THEIR LAST NAMES BEGINNING WITH A TO M COME EARLY FOR SET UP, AND THOSE BEGINNING WITH N TO Z STAY LATE TO CLEAN UP.*

*You are encouraged to do both.*





## Turners Resources.....Continued



Need Wood? These very nice pieces of wood can be found at the home of Charlie Conners, who lives outside Waynesboro (214 Cattle Scales Rd, Waynesboro, Va 229280, Phone 540-942-3235). He has a couple of sources of silver maple, black walnut, some of that nice box elder and perhaps other kinds of wood he would like to see someone take home and make something for Show-n-Tell. Call him!







## Repeat Wood Still Available at the Martin Farm



**Stonewall Jackson Prayer Tree** - A substantial amount of Prayer Tree wood is still available, and much of it is solid wood. Estimated weight 4,000 lb.



**Grottoes Box Elder** - Several nice pieces of this exceptional box elder still remain. The red color of the heartwood is outstanding. Estimated weight 400 lb.



**Martin Green Ash** - Several nice pieces of green ash that was blown down during the recent wind storm are available. There is some crotch wood. Estimated weight 600 lb.

## Turners Resources.....Continued



**Waynesboro Silver Maple** - A substantial amount of this Silver Maple is still available. Pieces are as large as 4' and as small as 16". It has some ambrosia staining. Much would make excellent natural edge, bark-on pieces. Estimated weight 8,000 lb.



**Amherst Black Walnut** - A trailer load of Black Walnut is waiting to be turned into something useful. The pieces range from about 40" to about 10". This wood had been cut some time back and the bark is slipping. Some of this wood could be candidate material for platters. Estimated weight 9,000 lb.

**Cemetery Norway Maple** - A few pieces of this maple are remaining. Estimated weight 200 lb.



**Martin Farm Cherry** - There are several cherry trees that have been dropped by storms. Estimated weight - a bunch of it.. Please don't let it go to firewood.

**Contact Denny Martin** - Bring your own chain saw or I can assist with my Stihl. I even have a loader/backhoe to assist with moving and loading this wood. You may even be offered a tour of the farm & shop.



## Buy & Sell Section

**Buy & Sell Section:** This space will be dedicated to featuring things that are for sale (i.e., tools, lathes, wood, turned items) or things that members are seeking to purchase. Please submit the items you wish to sell with any pictures prior to the publication of each newsletter. Because the newsletter completion date is so variable I suggest you call or email the newsletter editor with your information. Ads are usually run for two months. If you are seeking to purchase something and want to advertise in this venue please submit a written description to the editor:

Dennis (Denny) Martin, 272 Buffalo Branch Ln., Swoope, VA 24479  
540-337-7716 [ursus@mgwnet.com](mailto:ursus@mgwnet.com)

### Repeat

**Lathe For Sale** Repeat - (From Starke Smith) Starke, I am taking your advice and making plans to get a Powermatic 3520B lathe. However, I need to get rid of the two machines I have first. If you run across anyone who wants either a Shopsmith Mark V or a Powermatic Model 45, please ask them to contact me at 'mayeralm@comcast.net' or call me at home - 540-885-6984. I will negotiate on the price for either or both. I have attached pictures in case you need them. Both are in good running condition. I re-conditioned the Powermatic (re-painted, new 1 x 8tpi spindle, new Leeson 3/4 hp motor and new belt on the step pulley). The Shopsmith includes a bandsaw and a biscuit joiner attachment plus lots of accessories. Thanks for anyone you send my way.....Larry Mayer (Gail's husband)

I called Larry and he informs me that he plans now to keep the Shopsmith, but that the Powermatic 45 is still for sale. Call him for specifics and prices. Larry responded to my email that the PowerMatic 45 is still for sale..... editor.



*From Dennis Hippen*  
SEARS CRAFTSMAN POWER TOOLS FOR SALE

A friend is downsizing and has a 15 1/2" floor model drill press and a 12" band saw for \$175 each. Please call Don Plambeck at 540-885-8635 for more info if needed. Don lives in Staunton.



### Contributors Section

This is a new section of the newsletter that will be dedicated to articles, emails, and topics that are provided by our membership. You are encouraged to write articles, product or tool reviews, make suggestions about club meetings or the newsletter, or provide pictures and some text about something or someone that interests you. I would be most pleased to help in any way, including the photography or writing or with suggestions on topics. Please give me a call or send an email to Denny Martin (540-337-7716 or [ursus@mgwnet.com](mailto:ursus@mgwnet.com))....editor

*From the AAW*

## It's Your Turn 3

September 15-16, 2012  
Expoland - Fishersville, VA

AAW Chapter woodturning Clubs of Virginia host the 2012 Woodturning Symposium "A hands-on woodturning experience" on September 15 and 16, 2012 at The Expoland Exhibition Center, Fishersville, VA. This bi-annual symposium continues to lead the way in regional woodturning symposiums. It is your chance to step up to the lathe and have a mentor guide you as you do the turning.

This year our featured demonstrations will be given by Jimmy Clewes on Saturday and Sunday and by Brian Noble-Marx on Saturday. In addition to the traditional demonstrations, there will be 11 stations with talented VA turners guiding you in areas of their expertise as you do the turning at the lathe. You will find more information about the symposium in our brochure.

Registration is now open and we hope you will join us. Visit our website for complete details and on-line registration.

Contact Peter Toch at [ptoch@comcast.net](mailto:ptoch@comcast.net) for more information.

Have you checked out AAW's FUNDAMENTAL WOODTURNING?  
Great tips and tutorials are available at: [http://www.woodturner.org/  
community/fundamentals/?utm\\_source=Newsletter+%239&utm\\_](http://www.woodturner.org/community/fundamentals/?utm_source=Newsletter+%239&utm_campaign=newsletter+%239&utm_medium=email)  
[campaign=newsletter+%239&utm\\_](http://www.woodturner.org/community/fundamentals/?utm_source=Newsletter+%239&utm_campaign=newsletter+%239&utm_medium=email)  
[medium=email](http://www.woodturner.org/community/fundamentals/?utm_source=Newsletter+%239&utm_campaign=newsletter+%239&utm_medium=email)  
Submitted by Denny Martin



## Contributors Section

CA's - ONEWAY PRODUCTS *From C. A. Savoy*  
25% discount on most ONEWAY products , except lathes, plus shipping

This offer good thru AUGUST, 2012.

Go to ONEWAY website [www.oneway.ca](http://www.oneway.ca) to see products available.

Will provide quote upon request. Happy and Safe Turning!!! C A SAVOY

PLEASE NOTE UPDATE. ADDED FREE SHIPPING ON ORDERS OVER \$1,299.00.

Please share with your members! Any of your members who may wish to receive sale email direct, please provide me with name, email address and club name.

Thanks and Happy and Safe Turning!!!!!!!!!!!!

Hi guys,

These are toys that I would not mind having.....it would be a nice addition to my 4 wheeler and my chainsaws!!! I guess one can always wish and drool! I think I got it bad! :-D



**HEAVY INDUSTRIAL 38HP MILL WITH FULL HYDRAULICS**

*From Roger Chandler*



## Demonstration: Fred Williamson

Fred makes a small globe hollow form from start to finish.



Fred Williamson demonstrated making small hollow forms. He often uses Navajo pottery water jars as a model for his shape since it is a nicely rounded model and the narrow throat and bottom produce a nice shaped piece. The base and neck are approximately the same diameter.

He uses a tool rest he constructed himself with an offset post to reach into deeper vessels. He also has a stop on his post to repeatedly make a level cut with his boring bar as the angle and depth of the tool rest are changed. Another innovative technique is his use of a handle prop for his boring bar to reduce the stress on his shoulder.





Fred started by truing up the outside of the vessel with a level bowl gouge for rapid stock removal and demonstrating the techniques to produce a smooth surface using a bowl gouge at a 45 degree incline. He started hollowing at approximately 800 rpm with the form mounted on a 4 inch face plate with 12 - 1" screws.



Fred saws 45 degree angles on both ends of a 3/8" x ~12" piece of cold rolled steel, and then spot welds this piece off center to 1" round stock. By inserting the round stock into the bandjo he will adjust the level of the rest with the lathe and then complete the welding. After rounding the edges with a belt or wheel grinder it is ready to use. Welding the post off-set allows him to reach deeper in hollow forms or bowls. Fred has made several rests of different sizes to accommodate the variety of bowls and hollow forms he is so proficient at creating.





Dropping the handle and using a pull stroke and the trailing cutting edge is the technique Fred uses as a final, smoothing cut. Note the fine shavings as he slowly advances the bowl gouge to produce the smooth finish that minimizes sanding.





Note that many are watching Fred by looking at the projected video on the screen to Fred's left.







Fred uses a spade bit to auger a hole in the center to the approximate depth of the interior. Frequent clearing of the shavings is important as the bit can become difficult to remove when too many chips and shavings imbed themselves around the bit.





A boring bar with a 1/4" HSS bit is used to begin the hollowing of the globe. A support for the long handle on the 24" long boring bar is made of a ~3/4" x 1 1/2" piece of pine that has a notch in the top and the same height at the tool rest. Fred moves the support stick with his foot when needed.







Fred has recently been testing the 3/16" round carbide cutter created by Lyle Jamieson, and finds that it may be more easy to control than larger carbide cutters.





Kirk McCaulley likes his boring bar with a simple threaded set screw holding the 1/4" bit. He says it holds the bit securely and doesn't have to contend with the large nut on top of other boring bars.





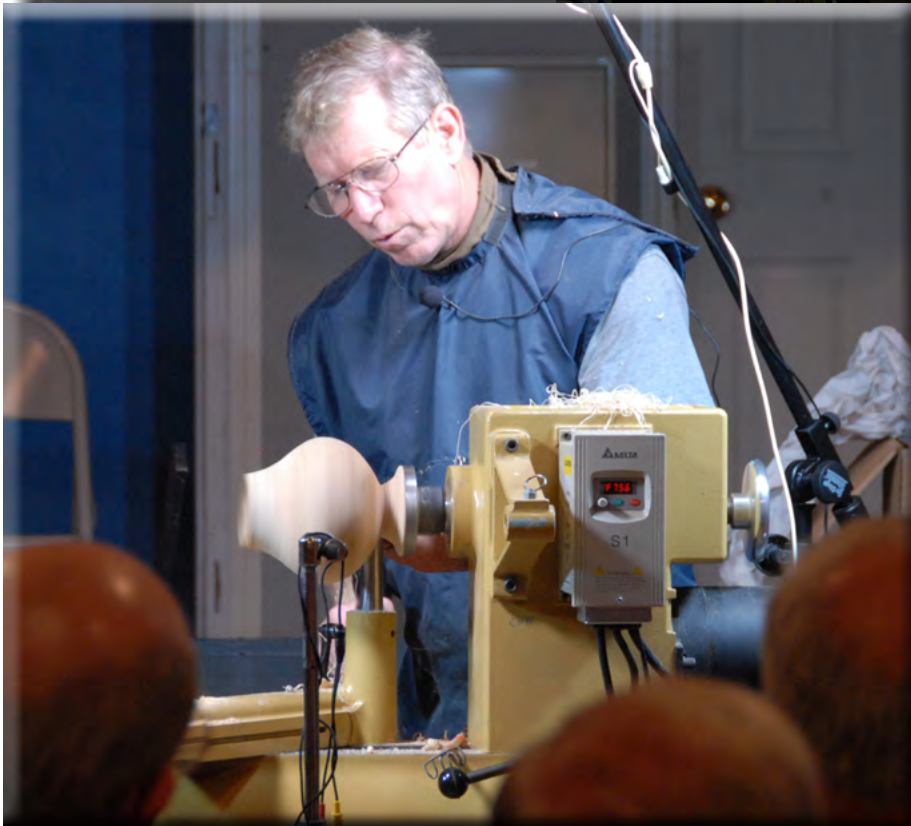


The advantage of the long, heavy boring bar becomes obvious the deeper the cutter is used to hollow the interior of the hollow form. Not only is the leverage of the tool and handle able to give outstanding control and minimize vibrations, the mass/weight of the tool decreases harmonic resonance.

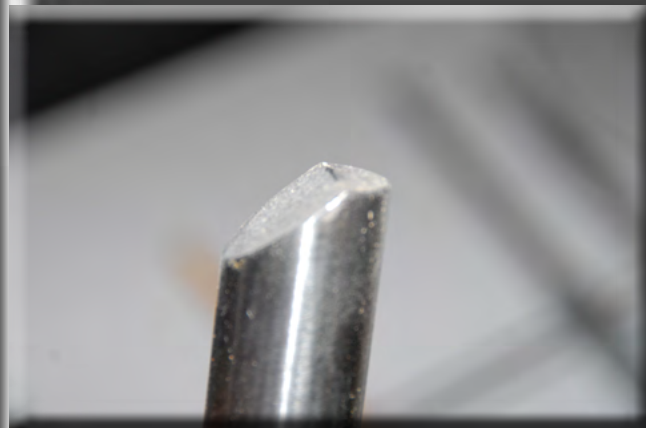




Fred prefers face plates with both an inner and outer circle of screw holes. As he nears the completion of the piece he will remove the outer ring of screws to allow him to finish the bottom more effectively without hitting screws, before parting off the piece from the face plate. Elbert Dale, who lives near the Williamson ranch, made many of his face plates.



A 1" round post as a tool rest allows Fred to part the piece using a traditional wide parting tool. The post allows him to position the tool rest close to the cut for better control.



Fred also made the small tool post rest he developed for parting (above, and also among the tools on the table under the bow saw blade). You can read more about making one in the article he wrote in the AAW magazine several months back.





Sanding, something few wood turners enjoy, is accomplished quickly by Fred's system of using Makita sanders with a speed contoler and custom built foam sanding pads. Sanding details can be found of Fred's web site: <http://www.fredwilliamson.com/Pages-Methods/Methods-of-Work-Main.html>



Sanding the interior of his small hollow forms is limited to where his fingers can reach. Customers don't seem to care if the interior is smoothly finished.



A shop-made bow saw is usually used to make the final parting cut (see following page), and the bottom is shaped and sanded by hand. He does have a shop-made flat disk sander to level the bottom of some bowls.







Frugal Fred makes many of his tools, including some of his boring bars, the bow saw, wood calipers, tool rests and handles. He even made the small chip/saw-dust rake to clear the interior as he turns (right).

Fred Williamson, past president of the CVW club, says on his web site: "If you are a lover of turned wood bowls, or have just discovered this site by chance, welcome to a gallery of my work. This website contains functional and artistic bowls turned from woods found near Charlottesville, Virginia. I work in a small studio tucked up against the mountains of the Shenandoah National Park, in a clearing among stately oaks, gums, maples, and white pines, on a small ridge above the Moormans River. The woods shelter us in winter, shade us in summer, and always remind me where my bowls come from. They define the work I do." We are fortunate to have Fred Williamson as a member of the CVW club.



# Shop of the Month – Marc Roth

## Article and Pictures by Dennis Hippen

A little bit about Marc Roth, our featured shop owner for this CVW newsletter by Dennis Hippen.

I Met Marc in the early 90's when he moved to Northern VA and my wife was his realtor. He was born and raised in Hays, Kansas and is a proud grad of Kansas State. His career in aerospace and satellites started in CA. He is one of the founders of Scitor and retired to Ford's Colony in Williamsburg. This is when the woodturning virus took hold and you will see his shop. He is a member of the Richmond Woodturners Club and always enjoys our CVW newsletters.

His other interests are photography, all things Apple, travel, wine, and golf. He and Shawni are new grand parents to Matthew, son of Marc's son Michael and daughter-in-law Jacqueline. Joan and I count the Roth's among our dearest friends.

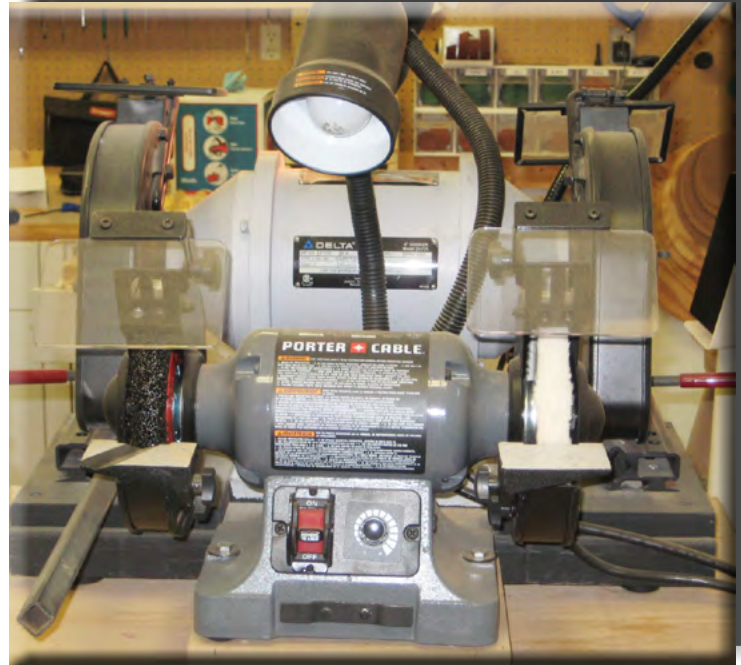
Marc with his Oneway lathe and dust hood tied to Oneida vac system. Hood and vac work great----hang unto your tools!! Note Marc is left-handed.







Green Ambrosia maple 14" bowl blank from Waynesboro. It has a deep crack with some bark inclusions.



Great shop tip - Marc has turning grinder/sharpener next to lathe on one side with another grinder behind it on a portable tool chest.



Marc has a Laguna 20" band saw that loves wood.

Editor's Comment - Please note that Marc has made sure that there is excellent lighting throughout the shop. However, a shop this clean strongly suggests that some kind of professional counseling is warranted.

Shop Smith from small prior shop/house. Marc still uses table saw, jointer, shaper, drill press, disk sander, and vacuum.







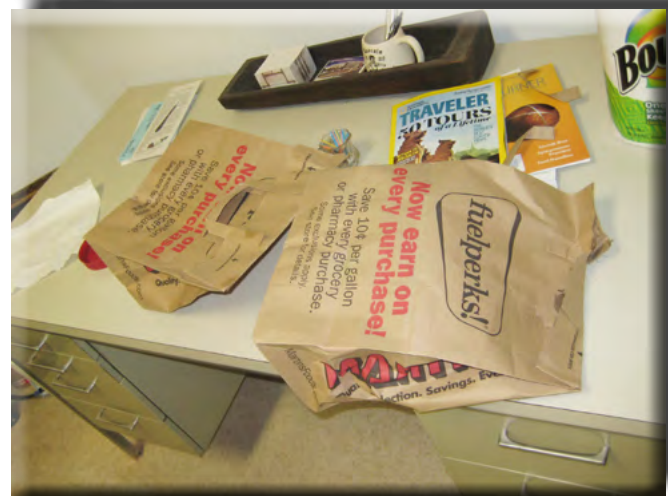
Neat wall display of old hand tools and sanding/turning accessories.



Note the handy tool parking caddy near lathe resting on an open drawer.



Close up of Oneida vac system.



Rough turned blocks placed in paper bags/marked/dated.

Shop is about 650 square feet and he must get counseling as it is TOO clean/organized!





Marc is checking his work.

Bowl finishing area and rough turned bowl storage. Note the bowl with the black area. This was a test sample of use of black

aniline powder dye from craft supply on Am. Elm. Set of three bowls he finished are in separate photo.



Closeup of dyed sample.



Marc's woodpile/storage areas. Many of these wood chunks came from Waynesboro and WV.



Making some final cuts on that beautiful One-way lathe. (Does he use that hood?)

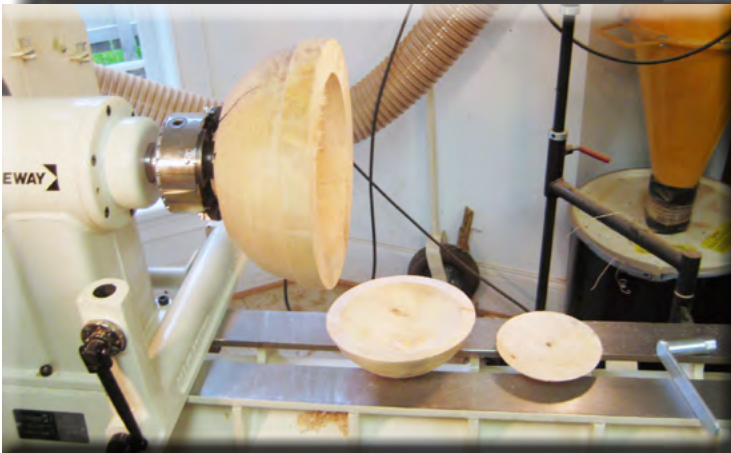




Marc planning next steps. Hummm...not sure why I (Hippen) gave him such a nice piece of wood!!



Oneway 2436 with outboard and vac hood.



Marc used his Oneway coring system to gain 3 bowl blanks from the single blank.



He made a handy storage idea for coring system



Making outer cored blank thinner for drying.



Bowl crack repairs from Marc Roth's shop: June 2012

Step by step process depicted. There are many other methods to filling large cracks, but this works well for me and I like the ease and finish of the epoxy slurry.....Dennis



Marc cleaning out bark inclusion & the deep crack with air compressor.



Marc says "Hippen, you are crazy to think we can repair this mess"!



Epoxy (I prefer the 5 minute epoxy) with espresso coffee grounds.



Clearing/cleaning/smoothing crack opening to ease filling and finishing product.



A Sawzall blade is an ideal tool to help clean out the crack.



Place some thin CA at bottom of crack to glue hard to reach areas.



Mixed epoxy/coffee (about 50/50)





Apply coffee/epoxy mix and work into crack & smooth with fingers and leave overfilled on crack until hardened.



Wait until epoxy sets.



Place bowl blank back on lathe and gently tool off the filled area excess filler.



Crack after gently tooling off excess.



He did such a good job the inside of bowl also has the cracked filled. When he goes to finish turn the blank, any voids can be filled the same way and will match easily. This mixture is easy to sand/finish also.



Marc is pleased and had never cleaned and filled large cracks using this method of using coffee grounds.

Editor's Note: A special thanks goes out to Dennis Hippen for taking the time and expending the effort to both write this Shop of the Month article and submit the pictures and create the captions. I would encourage anyone in the club to write an article, small or large, to be included in future newsletters.





The  
Bowls  
of  
Marc  
Roth