



# The Wood Spinner

Central Virginia Woodturners <http://www.centralvawoodturners.org>

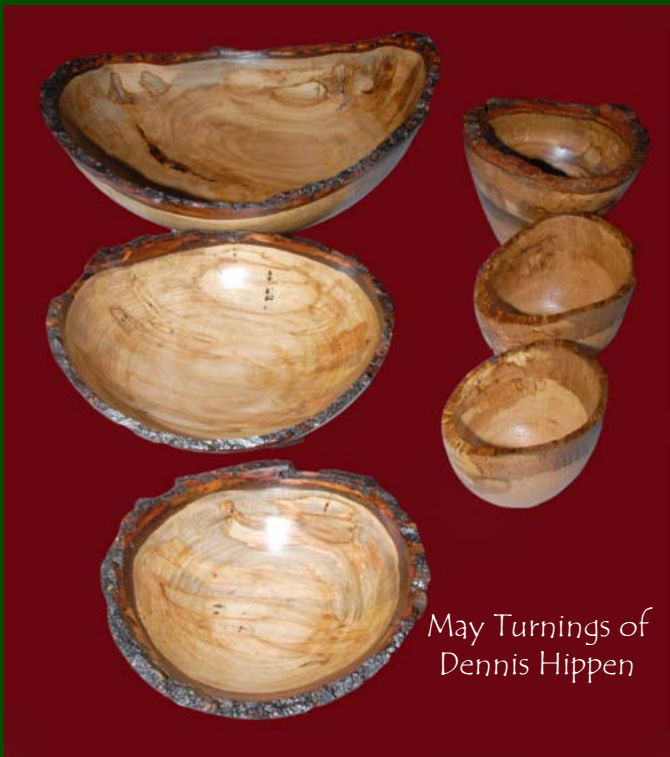
May 15, 2012  
In This Issue

President's Corner  
Minutes  
Treasurer's Report  
Show & Tell  
Silent Auction  
Turner's Resources

Pg 2  
Pg 3  
Pg 4  
Pg 5-13  
Pg 14  
Pg 14

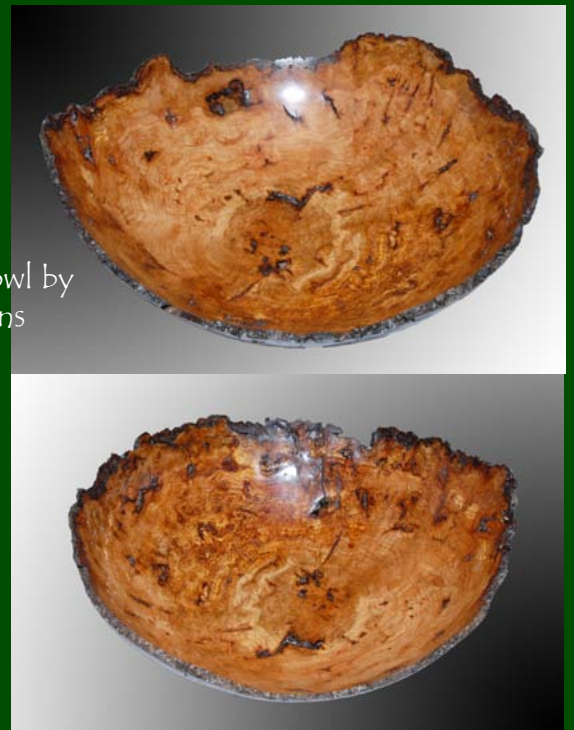
Available Wood  
Buy & Sell  
Contributors  
Demonstration  
Shop of the Month

Pg 15  
Pg 16  
Pg 17-20  
Pg 21-27  
Coming Soon



May Turnings of  
Dennis Hippen

Oak Burl Bowl by  
Phil Evans



Cherry Bowl by Andy Rhodes



May Turnings  
of Rolf Gebel





# The Wood Spinner

Central Virginia Woodturners <http://www.centralvawoodturners.org>

## CVW Newsletter - May 2012

### President's Corner

I like multi station programs. Our May meeting lay out was different from previous multi station meetings. Dennis Hippen has done a super job this year providing excellent programs and I give him credit for stepping out of his comfort box and trying a new approach.

What do you think? Did you like it or not? Your observations and constructive criticisms help us a lot. Please email Dennis or myself with your thoughts. I was especially pleased with the volunteer demonstrators. Thank you Rolf, Andy, Jay, Elbert and Richard! I have always wanted to learn the finer techniques of using a skew so I chose to observe Elbert make one of his signature tops. And, since I've received an Alan Lacer Skew for Christmas, this meeting was the perfect opportunity to be mentored by the club's skew master. I am now the proud owner of a miniature top. Now that I've mastered all aspects of using this fine tool, I will have to retrieve my skew from the garden shed, where I store it when

not using it to cut asparagus. It lost its keen edge from planting tulips so I'll have to re-grind and hone it. For my first project I think I'll turn a natural edge bowl.

The demonstrators produced more than the normal volume of chips and curls but clean up went quickly as many members pitched in to sweep, shovel, stack chairs and haul tables. A special thanks to all who came early to help set up and those who helped clean up. Many hands do make for quick work.

We still have an abundance of wood at the club and Denny Martin and Charlie Conner have mounds of wood at their houses. Contact them to schedule your pick up.

Our next meeting is June 19th. Until then keep on turn'n and please do it safely.



Tom Evans, President

The next club meeting will be Tuesday, June 19, 2012 from 7:00 pm to 9:00 pm. The demonstrator will be Fred Williamson who will turn small globes from blanks to finished product. Bring items for Show & Tell, and names will be drawn for the gift certificate giveaway. There will be a Silent Auction, and the Club Store will be open.



April 17, 2012 Minutes  
Crimora Community Center  
Central Virginia Woodturners Club (CVW)

### Officers

President:	Tom Evans
Vice President (Programs):	Dennis Hippen
Second Vice President:	Nate Hawkes
Treasurer:	Richard Landreth
Secretary:	Jim Oates

### Key Functional Support Offices

Librarian:	Hal Green
Video Crew:	John O'Neil
Newsletter Editor:	Dennis Martin
Web Master:	Tim Quillen
Store Manager:	Kirk McCauley
Food Coordinator:	Dick Miksad

## OFFICER'S REPORT

Attendance: 38

Guests: Earl Slatt

The following officer was not in attendance:  
Nate Hawkes

Tom Evans called the meeting to order at 7:00 and asked if there were any present missing email and asked for an address for Lew Kiigler.

Tom summarized the treasurer's report indicating there is \$1740 in the checking account and that the equipment fund had grown sufficiently to allow purchase of a new drum of Anchor Seal.

Tom indicated there was a large amount of

wood available due to a recent donation by a member of Blue Ridge Woodturners who is moving out of state. The wood is available for a donation of your choice.

Denny Martin and Charlie Conner have lots of wood available SJPT Oak, Cherry, Maple and Box Elder free for the cutting.

Shenandoah Valley Art Center will be presenting a month long show of our work in September. You can just show or you can offer your work for sale. Bring your pieces to the August meeting and Tom Evans will coordinate.

Tom announced that Show and Tell gift certificates would be given to the winners at the next meeting.

Miles Everard is conducting a wood turning class at western Albemarle High School and is using some of the donated wood for his class. He announced that there will be a Grand Caverns Heritage Day June 16 and that he would be there with his trailer demonstrating and that all members were welcome to set up free of charge for the day.

June 23 Tom Evans and Richard Landreth will do a demonstration at the R.R. Smith Center in Staunton.

Jim Oates, CVW Secretary



## CENTRAL VIRGINIA WOODTURNERS CLUB MONTHLY FINANCIAL REPORT AS OF : 3-25-2012

\$1,778

OPENING BALANCE

### REVENUE/DEPOSITS

\$100.00 Dues

Demo Entry Fees

\$21.00 Silent auction

\$277.50 Club store sales

Raffle

Change Fund

Equipment Fund

\$74.00 Other (donation for donated wood)

Reimbursement from Equipment Fund for new microphone

Deposited: 3-25-2012

\$473.00

TOTAL REVENUE/DEPOSITS

### EXPENDITURES

Quarterly Rent for Crimora Building

\$18.83 Tom Evans - Keys

\$116.49 Club Store

\$8.00 Transfer to Equipment Reserve for April Dues

\$143.00

TOTAL EXPENDITURES

\$2,107

CLOSING BALANCE

(Checking Account)

Excludes: \$30.00 Treasurer's change fund

\$30.00 Club Store change fund

\$656.00 Equipment Reserve Savings account

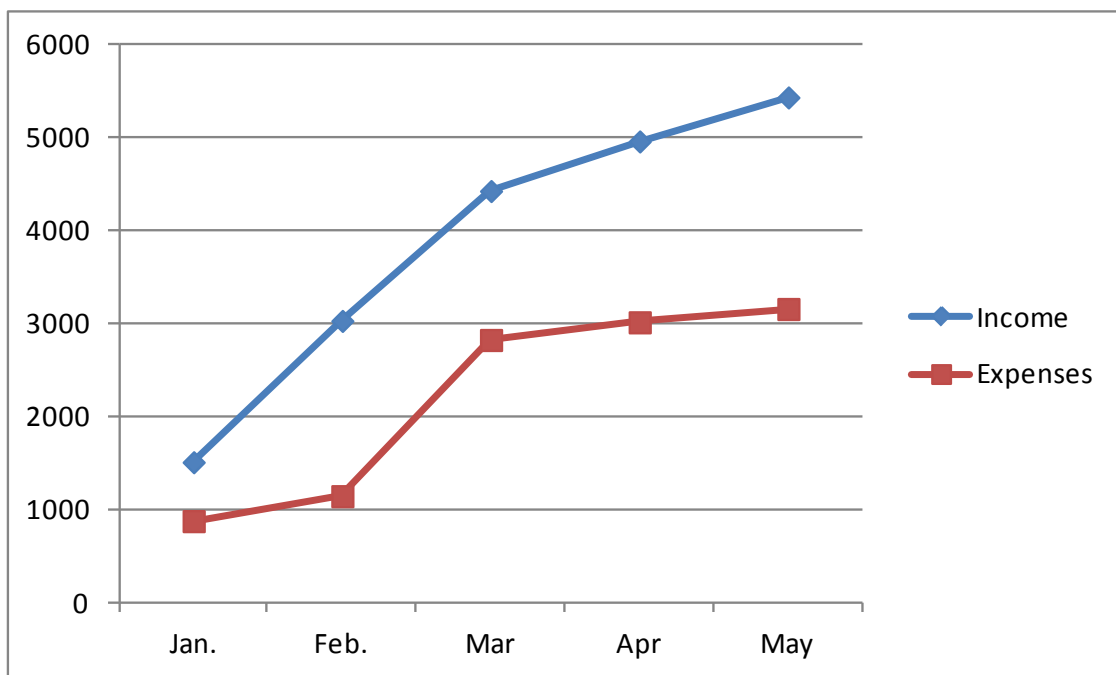
Total exclusions

\$716.00

### NOTE:

Some totals are rounded to even dollars for ease of reading

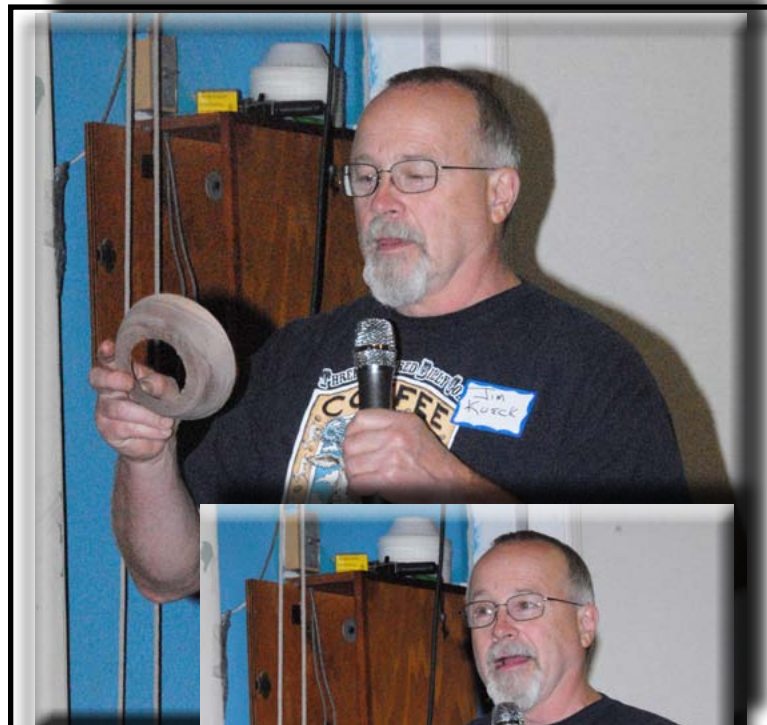
### CVW Accumulated Income versus Accumulated Expenses (Jan. - May)





# Show and Tell:

Members and guests are encouraged to bring their best turnings each month and to share some of the details like finish or problems. Bowls are a common item on display and they showcase the beautiful grain and figure in many woods. Some are augmented with dyes or stains, or they can be carved or embellished in a number of ways. Practical items such as lamps, pepper and salt grinders, small boxes and other items are also frequently brought in each month. The variety of talents and products are a constant amazement to anyone attending the meeting. For more information about the Central Virginia Woodturners club and to view previous newsletters simply go to the CVW web site: <http://centralvawoodturners.org/>



Jim Kueck – presented his “Walnut funnel” to show how easy it is to turn just a little too deep and take the bottom out of a bowl. He followed that up with a very nice square bowl of Cherry that was not finished yet. He also showed a “corduroy cherry” bowl which had a rippled surface caused by tool chatter. His nice walnut bowl was finished with water based varnish and several tips were offered on improved finishing techniques to smooth the finish.





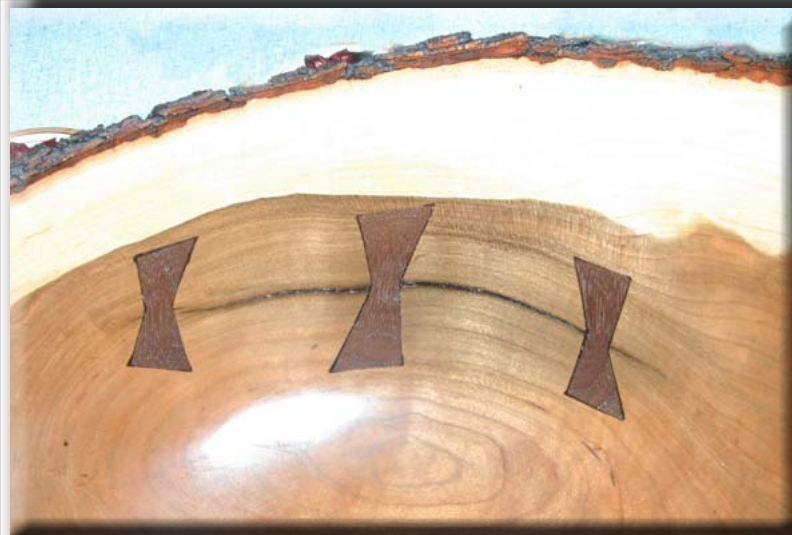
Charlie Wenzel - Showed two pens that were eccentrically turned to form three sides following the Barbara Dill multi-axis method. One pen was made from Zebra wood and purple heart. The other was made of Goncalo Alves, a South American wood. He also showed his Mulberry maul with an Ash handle covering a metal pipe core that he called a "Wife Tamer". His Brazilian Cherry scribe was made from music wire or drill rod that was sharpened and he also had a flower pot shaped bowl turned from Spalted Oak.



Phil Evans - Showed an exceptionally large Oak Burl bowl with natural edge made for his neighbor. He also presented four natural edge bowls, two had the bark on. He displayed pictures of the electric hoist he used to load large blanks and a 2 X 2 table he built to collect his sanding dust.



Dennis Hippen - brought 3 Stonewall Jackson Prayer Tree bowls with natural edges and three cored Am-brosia Maple bowls with the bark on and well preserved. We couldn't find the missing piece either.



Andy Rhodes - showed a nicely shaped natural edge bowl with butterfly stitches that closed a break and enhanced the overall appearance of the bowl.

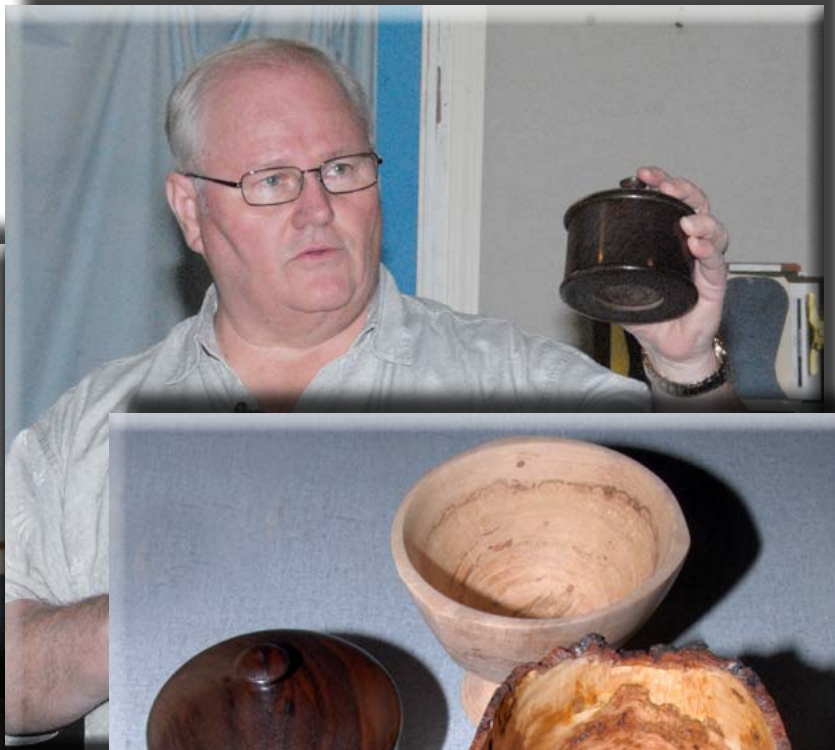




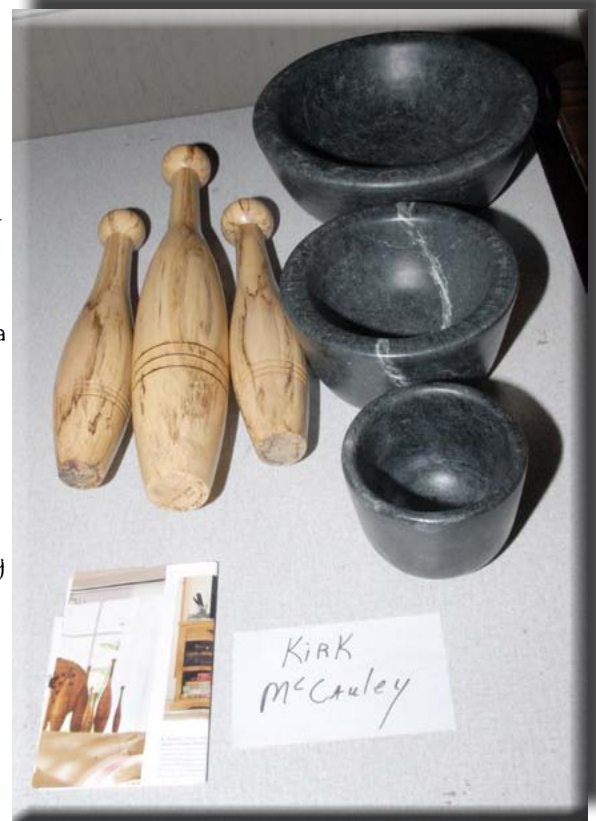
Rolf Gebel -  
Showed three  
Cherry boxes of  
the type he will  
demonstrate  
with fitted lids  
and cloisonné  
embellished lids.  
He had added  
emphasis lines  
burnished into  
the pieces to  
hide the lid edge  
very nicely.



Roger Chandler - Presented two nice lidded vessels finished with General Finishes Woodturner's Finish stating that he could apply 10 coats in thirty minutes turning slowly on his lathe. The results on WALNUT AND Cherry are very nice.







Kirk McCauley – showed two three sided cups a la Barbara Dill. One was spiraled and the other straight by following her graphically instructing us on sequences to produce various types. He recommended keeping the pieces relatively small due to vibration of larger pieces. He also presented three soapstone bowls from 4 to 10 inches in diameter. The largest weighed approximately 50 pounds. He attached each to a wooden block using 2 part epoxy glue to bond them. His favorite tool to use on these is his custom made boring bar. He also showed 3 Monticello Poplar juggling pins he had made for his wife.





Hal Green – brought in a deep natural edge Box Elder bowl with nice coloring through-out. The bold red color of the heartwood was impressive.

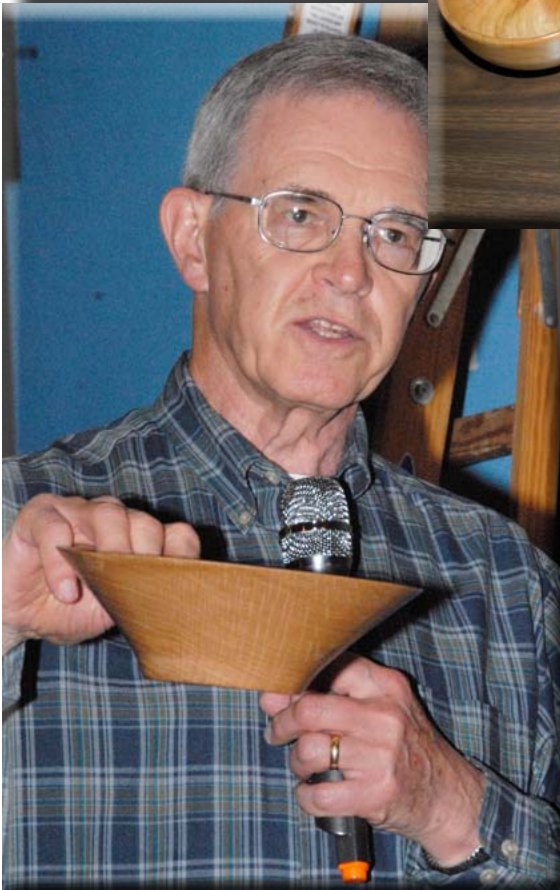


Jim Oates – showed a Redwood Burl lidded bowl topped with an iridescent marble peak made from some of the donated wood and fitted to an Apple bowl made earlier. He also showed the hazards of internally clamping a thin walled bowl with a piece that had split due to the force of the chuck. Moral – take a little time at the end and remount your piece on a jam chuck or vacuum chuck when approaching a thin wall.

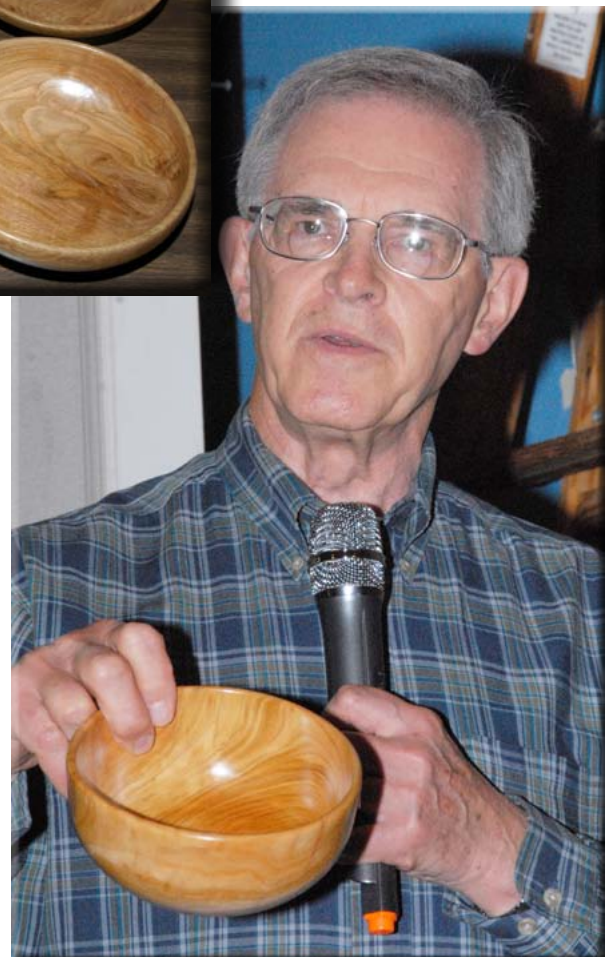




Don Voas – showed us the small Cherry “cookie” (end grain) bowl he made during his demo which had



turned into a top due to asymmetric shrinkage pushing the bottom center out. He also shared four SJPT Oak bowls of different shapes and a large cherry end grained bowl





Tom Evans - presented six items including two Stone-wall Jackson Oak candle sticks and salt and pepper shakers. All had gone oval after turning. He also had a beautiful Red Oak burl bowl, a series of cored bowls that the smaller one also went oval but the large natural edge bowls appeared stable. His very large cherry bowl was stabilized with his trademark feet and had a small split on the edge that appears repairable.





Miles Everard continues to amaze members and guests with his composit creations. This candle stick was created out of walnut, basswood and mahogany. Note: Miles, for some dumb reason I failed to take a picture of this for more details; this is a good time to fire the newsletter editor.....editor.



The Silent Auction functions as a means for those that have too much wood to share it with those that could use pieces to turn. Maple, Cherry, Montecello Yellow Poplar, Oak, Walnut, Memosa and other species regularly are available. The

## Silent Auction



bids provide additional needed income for the club. Often nice pieces sell for only \$1 - \$5. Members have a long history of sharing their valuable wood supplies.

Silent Auction:  
There was a great variety of wood available at the silent auction tables but produced only \$21 in sales.

## Turners Resources.....by Editor

*Reminder: It was proposed at the January, 2011 meeting that members with their last names beginning with A to M come early for set up, and those beginning with N to Z stay late to clean up. You are encouraged to do both.*



## Repeat Wood Still Available

## Turners Resources.....Continued

at the Martin Farm



**Stonewall Jackson Prayer Tree** - A substantial amount of Prayer Tree wood is still available, and much of it is solid wood. Estimated weight 4,000 lb.



**Waynesboro Silver Maple** - A substantial amount of Silver Maple is still available. Pieces are as large as 4' and as small as 16". It has some ambrosia staining. Much would make excellent natural edge, bark-on pieces. Estimated weight 8,000 lb.



**Grottoes Box Elder** - Several nice pieces of this exceptional box elder still remaining. The red color of the heartwood is outstanding. Estimated weight 400 lb.



**Amherst Black Walnut** - A trailer load of Black Walnut is waiting to be turned into something useful. Recently acquired, the pieces range from about 40" to about 10". This wood had been cut some time back and the bark is slipping. Some of this wood could be candidate material for platters. Estimated weight 9,000 lb.



**Cemetery Norway Maple** - A few pieces of this maple are remaining. Estimated weight 300 lb.

**Contact Denny Martin** - Bring your own chain saw or I can assist with my Stihl. I even have a loader/backhoe to assist with moving and loading this wood. You may even be offered a tour of the farm & shop.



## Buy & Sell Section

**Buy & Sell Section:** This space will be dedicated to featuring things that are for sale (i.e., tools, lathes, wood, turned items) or things that members are seeking to purchase. Please submit the items you wish to sell with any pictures prior to the publication of each newsletter. Because the newsletter completion date is so variable I suggest you call or email the newsletter editor with your information. Ads are usually run for two months. If you are seeking to purchase something and want to advertise in this venue please submit a written description to the editor:

Dennis (Denny) Martin, 272 Buffalo Branch Ln., Swoope, VA 24479  
540-337-7716 [ursus@mgwnet.com](mailto:ursus@mgwnet.com)

### Repeat

**Lathe For Sale** Repeat - (From Starke Smith) Starke, I am taking your advice and making plans to get a Powermatic 3520B lathe. However, I need to get rid of the two machines I have first. If you run across anyone who wants either a Shopsmith Mark V or a Powermatic Model 45, please ask them to contact me at 'mayeralm@comcast.net' or call me at home - 540-885-6984. I will negotiate on the price for either or both. I have attached pictures in case you need them. Both are in good running condition. I re-conditioned the Powermatic (re-painted, new 1 x 8tpi spindle, new Leeson 3/4 hp motor and new belt on the step pulley). The Shopsmith includes a bandsaw and a biscuit joiner attachment plus lots of accessories. Thanks for anyone you send my way.....Larry Mayer (Gail's husband)

I called Larry and he informs me that he plans now to keep the Shopsmith, but that the Powermatic 45 is still for sale. Call him for specifics and prices. Larry responded to my email that the PowerMatic 45 is still for sale..... editor.



*From Dennis Hippen*  
**SEARS CRAFTSMAN POWER TOOLS FOR SALE**  
A friend is downsizing and has a 15 1/2" floor model drill press and a 12" band saw for \$175 each. Please call Don Plambeck at 540-885-8635 for more info if needed. Don lives in Staunton.





## Contributors Section

This is a new section of the newsletter that will be dedicated to articles, emails, and topics that are provided by our membership. You are encouraged to write articles, product or tool reviews, make suggestions about club meetings or the newsletter, or provide pictures and some text about something or someone that interests you. I would be most pleased to help in any way, including the photography or writing or with suggestions on topics. Please give me a call or send an email to Denny Martin (540-337-7716 or [ursus@mgwnet.com](mailto:ursus@mgwnet.com))....editor

*From the AAW*

## It's Your Turn 3

September 15-16, 2012  
Expoland - Fishersville, VA

AAW Chapter woodturning Clubs of Virginia host the 2012 Woodturning Symposium "A hands-on woodturning experience" on September 15 and 16, 2012 at The Expoland Exhibition Center, Fishersville, VA. This bi-annual symposium continues to lead the way in regional woodturning symposiums. It is your chance to step up to the lathe and have a mentor guide you as you do the turning.

This year our featured demonstrations will be given by Jimmy Clewes on Saturday and Sunday and by Brian Noble-Marx on Saturday. In addition to the traditional demonstrations, there will be 11 stations with talented VA turners guiding you in areas of their expertise as you do the turning at the lathe. You will find more information about the symposium in our brochure.

Registration is now open and we hope you will join us. Visit our website for complete details and on-line registration.

Contact Peter Toch at [ptoch@comcast.net](mailto:ptoch@comcast.net) for more information.

Have you checked out AAW's FUNDAMENTAL WOODTURNING?  
Great tips and tutorials are available at: [http://www.woodturner.org/  
community/fundamentals/?utm\\_source=Newsletter+%239&utm\\_](http://www.woodturner.org/community/fundamentals/?utm_source=Newsletter+%239&utm_campaign=newsletter+%239&utm_medium=email)  
[campaign=newsletter+%239&utm\\_](http://www.woodturner.org/community/fundamentals/?utm_source=Newsletter+%239&utm_campaign=newsletter+%239&utm_medium=email)  
[medium=email](http://www.woodturner.org/community/fundamentals/?utm_source=Newsletter+%239&utm_campaign=newsletter+%239&utm_medium=email)  
Submitted by Denny Martin



## Contributors Section

Hi All:

Please share with your members!!!

*From C. A. Savoy*

Any of your members who may want to receive sales email direct, please provide me with name , email address and club name.

Attached is my CA-ONEWAY sales flyer for 5-28 thru 7-1-2012.

Most all ONEWAY products, except lathes, are discounted 20% and free shipping on orders over \$300.00.

For products not on list email CA at [cadjsavoy@cox.net](mailto:cadjsavoy@cox.net) for sale price.

Check web site [oneway.on.ca](http://oneway.on.ca) for all products!!!! Will provide quote upon request

When you receive order: Send check to-- C.A. Savoy, 1309 Gatewood Dr., Alexandria, Va. 22307

Happy and Safe Turning !!!!!

CA

*From Roger Chandler*



Roger Chandler, who is a member of both the CVW and WToV clubs, is preparing for his demonstration on turning boxes in Mt. Jackson in July.



## Contributors Section, Cont.

## Grand Caverns Heritage Day

Just received the follow-up from Miles on Grand Caverns Heritage Day:

*From Jim Oates  
& Miles Everard*

After talking to our club members, I put in an application for the Grand Caverns Heritage Day, June 16th, 2012 in the name of our club. The day's activities include Civil War reenactments, a blacksmith, weavers, children's activities, cannon and weaponry demonstrations, historical exhibits, the History Mobile and many other activities.

I was asked to bring my trailer so turning demonstrations could be included. This invitation has been expanded so other wood turners can display, sell and if possible demonstrate their craft. I intend to be on the cavern grounds about 7:30 a.m. to get set up. (The day's events are supposed to begin at 10:00 a.m.).

Anyone interested in participating can : 1.,call me for information; 2, bring your display to Grand Caverns that day; 3, bring things to my home for display; or 4, come and participate with me that day (10:00 a.m. 'til 4:00 p.m.).

Call 540-949-7947 or email: [1annette@ntelos.net](mailto:1annette@ntelos.net). Hope you can join me that day.

Miles Everard

Last chance to follow-up on Grand Caverns Heritage Day:

Miles had several indications of interest at the meeting but only one follow-up so far.. This is a great place to show your wares and he could use some additional demonstrators. I have included the original info in case you have misplaced it. There is no charge to set up. Let him know if you are interested.

Jim Oates

After talking to our club members, I put in an application for the Grand Caverns Heritage Day, June 16th, 2012 in the name of our club. The day's activities include Civil War reenactments, a blacksmith, weavers, children's activities, cannon and weaponry demonstrations, historical exhibits, the History Mobile and many other activities.

I was asked to bring my trailer so turning demonstrations could be included. This invitation has been expanded so other wood turners can display, sell and if possible demonstrate their craft. I intend to be on the cavern grounds about 7:30 a.m. to get set up. (The day's events are supposed to begin at 10:00 a.m.).

Anyone interested in participating can : 1.,call me for information; 2, bring your display to Grand Caverns that day; 3, bring things to my home for display; or 4, come and participate with me that day (10:00 a.m. 'til 4:00 p.m.).

Call 540-949-7947 or email [1annette@ntelos.net](mailto:1annette@ntelos.net).

Miles

## Contributors Section, Cont.

From Bob Vaughan  
Photos by Bob

From Bob Vaughan,  
member of the Blue Ridge  
Woodturners, who lives in  
Roanoke:

"I got some American chestnut that had some windshake in it. At first I was suspicious, but a pop with a hammer sheared the suspected area. Imagine the larger one spinning on the lathe. Where would the faceplate be screwed? That blank would have barely made it up to speed before it would have come apart. The smaller blank shows a ring that's wind shaken. The ring is a little sunken. The result is elegantly cut up firewood and I get to keep my head. Bob"





## Demonstration: Multi-Station

Elbert Dale - Proper Use of the Skew  
Andy Rhodes - Green Bowl Turning  
Richard Landreth - Turning Pens & Pencils  
Rolf Gebel - Turning Small Boxes  
Jay Lindhjem - Green Bowl Turning

Multi-Station demonstrations are often popular and well attended. It is an opportunity to see the work of an accomplished turner working with a particular tool, wood or sharing a technique. This format is so popular that it has been adopted as the base format for the semi-annual Virginia Woodturners Symposium, which will be held at Expo in Fishersville this coming September 15-16. Anyone interested in wood turning is encouraged to attend. Another multi-station demonstration is scheduled for the November, 2012 CVW meeting.





## Demonstrations:

Five stations were set up in the center of the meeting room with each demonstrator at their own lathe.

Andy Rhodes and Jay Lindhjem showed their approach to mounting and turning large green bowls by mounting on a face plate and working with a bowl gouge at slow speeds adjusted to accommodate the eccentricity of the blank and the diameter of the piece. Large blanks that are roughed out can cause a great deal of vibration and balance problems until well rounded. Speed can be increased as the weight is reduced but care must be taken since centrifugal force increases as the square of the diameter.

Elbert Dale did his usual masterful job of making small tops using a large skew to produce tops of various sizes and shapes using only the skew. He started with setting the tool support above the centerline and explained how that and riding the bevel produce extremely smooth surfaces. Careful sharpening of the curved edge of the bevel is critical and is accomplished after hollow grinding the edge with a fine diamond sharpening card to remove the burr from the edge. Care must be taken to work with the bottom half of the skew to reduce chatter and catches when working parallel to the surface. The point of the skew can be used to reduce the diameter on a curve to form rounded shapes but there is a higher risk of catching. Extremely small pieces can be turned with a skew with practice.

Rolf Gebel showed how to turn lidded boxes with tightly fitting lids. He turns boxes similar to the "cookies" turned during the Don Voas demo. Since the axis of the box is that of the wood care must be taken to accommodate the grain direction to eliminate fuzzy surfaces. Bowl gouges do not work well parallel to the grain and scrapers are better suited to turning the interior. His inlay in the tops added to the beauty of the pieces.

Richard Landreth set up his pen making lathe with his mandrel using blanks he had drilled and sized prior to the demonstration. He showed how to mount these blanks on the mandrel with the appropriate spacers used for size guides. He explained the various materials and finishes that can be used to enhance the appearance of the finished pen. His favorite finish for wood is Shelawax that is buffed with white diamond paste to a gloss and then polished with a cloth.

All of these demonstrations were conducted with a constant stream of questions and answers that are impossible to summarize – You had to be there and still couldn't absorb the wealth of knowledge possessed by these turners. Don't miss the next multi-station demo as they are always a gold mine of information

Jim Oates, Secretary & Extraordinary Taker of Minutes



## Elbert Dale - Dealing with the Skew

Elbert Dale is the club "skew master", and he was well prepared to demo this sometimes difficult tool. Armed with his large, curved edged skew, he swiftly would turn a rough blank into a cylinder. From this he would quickly create one of his trademark tops using only this tool. It is clear Elbert has a real challenge on his hands trying to enlighten CVW club president Tom Evans (left & below) about the techniques and advantages of turning with the skew. Surprising everyone, it was reported that Tom actually made some progress.



Many thought Charlie Conners (below) was untrainable, but the gifted hands and instruction by Elbert successfully brought Charlie up several notches in his skew-handling skills.....an incredible feat.





## Andy Rhodes - Turning Green Wood Bowls

Andy Rhodes began turning about a year ago as a break from his many years of cabinet making. Since that beginning bowl, Andy has become a prolific turner after finishing his shop-made lathe and moving to his impressive mountain home and a great workshop. Andy creates many beautiful bowls, some quite large. He often has a place in many of the craft shows throughout the state. Dave, his dad, watches (blue shirt) as Andy works on a large maple bowl as the turning wood sent water through the air from the spinning wood.



Peter Welch (below), past president, tried his hand at the large maple bowl that Andy was shaping. Hal Green and others were observing (right & below). Andy produced the largest ribbons of wood that evening.



Dennis Hippen watched Andy turn and later was observed making a mess of the bowl. Andy quickly eliminated the mistakes. We hope Andy will bring that bowl to the next meeting as a finished product.





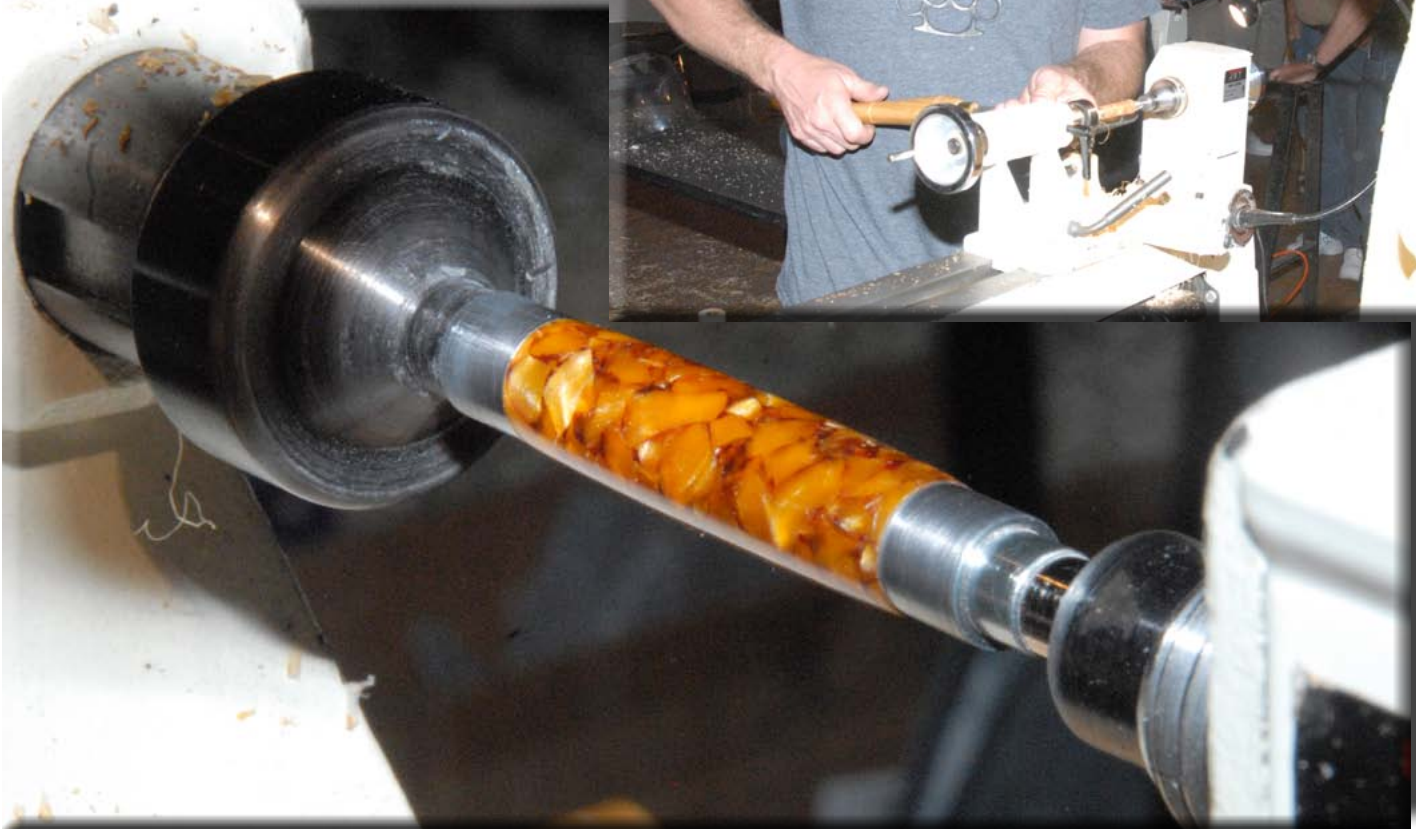


## Richard Landreth - Turning Pens & Pencils



Our club Treasurer, Richard Landreth, is an accomplished pen turner. When Betty Gruber, who also does a lot of pen turning was unable to provide the pen turning demo because of a conflict, Richard was kind enough to step up to the plate. His pen turning demo was popular among those attending the meeting. This is an excellent picture of Richard (far right). The face shield not only provided for safe turning, it provided an example to those that are new to turning.

Among other techniques, Richard shared his finishing system, tools and tool grinds. The finished product by Tim Kipps was impressive.





## Rolf Gebel - Turning Small Boxes



Rolf Gebel has recently been focusing on turning small boxes and has brought several to display for the Show & Tell sessions. Rolf was kind enough to share his techniques and offer anyone the opportunity to try their hand.





## Jay Lindhjem - Turning Green Bowls



Jay was most kind enough to step up to the plate to fill in for Bryce Connley, who had a meeting conflict.



Jay took a moment to see where all the large shavings were coming from only to see that Dennis Hippen was the problem.